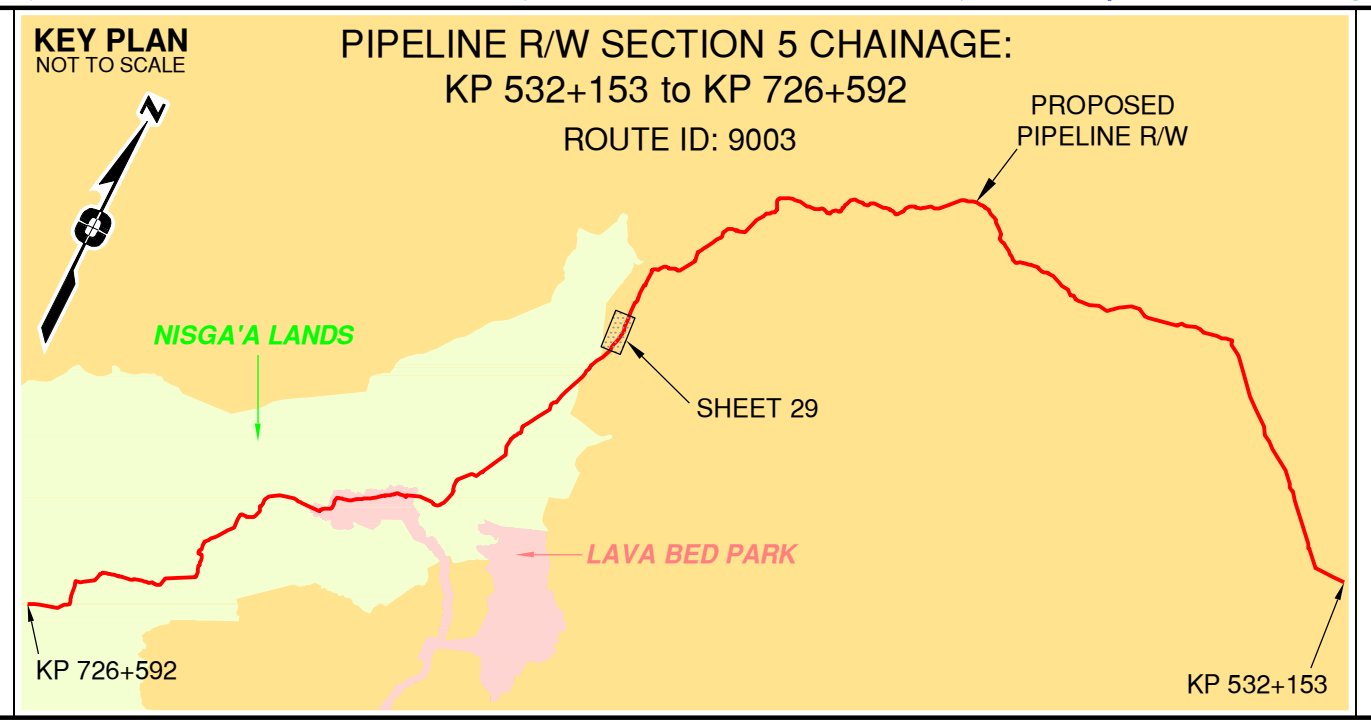


Rev	Revision Description	Date(Y/M/D)	By
0	Original Plan Prepared	2014/09/19	DC
1	Construction Plan Based on Rev.0 (2014/09/12) Except for New Construction Corridor: Shape, Label, Area Table & ePass Corrected Area on (S1)	2014/12/31	DC

LEGEND	
Proposed Pipeline R/W shown thus: [Symbol]	Fish/Wildlife Reserve body shown thus: [Symbol]
Proposed Temp. Workspaces shown thus: TWS / TWS	Grazing Tenure body shown thus: [Symbol]
Proposed Log Decks & Storage Sites shown thus: [Symbol]	Mineral Claim body shown thus: [Symbol]
Right of Way shown thus: [Symbol]	Tree Farm Licence shown thus: [Symbol]
Roads shown thus: [Symbol]	Quarry Reserve body shown thus: [Symbol]
Highway shown thus: [Symbol]	Ungulate Winter Range body shown thus: [Symbol]
Railway line shown thus: [Symbol]	Visual Land Inventory shown thus: [Symbol]
Seismic line/trail shown thus: [Symbol]	Watershed Reserve body shown thus: [Symbol]
Recreation Tenure shown thus: [Symbol]	Wind Tenure body shown thus: [Symbol]
Drainages shown thus: [Symbol]	Woodlot body shown thus: [Symbol]
Buried cable shown thus: [Symbol]	Fault Line shown thus: [Symbol]
Buried pipe shown thus: [Symbol]	Misc Reserve/Notation body shown thus: [Symbol]
Overhead powerline shown thus: [Symbol]	Misc Licence/Permit body shown thus: [Symbol]
Riparian Reserve Zone shown thus: [Symbol]	Stantec Wetland / Classification shown thus: [Symbol]
Riparian Management Zone shown thus: [Symbol]	Crossings shown thus: [Symbol]
Forest Cover Reserve Area shown thus: [Symbol]	Old Growth Management Area shown thus: [Symbol]
Archaeological site shown thus: [Symbol]	Residences shown thus: [Symbol] Power Pole shown thus: [Symbol]
Agricultural Land Reserve body shown thus: [Symbol]	Nisga'a Lands shown thus: [Symbol]
Coal Tenure body shown thus: [Symbol]	Nisga'a Village Lands shown thus: [Symbol]
Cutblock body shown thus: [Symbol]	Lava Bed Park shown thus: [Symbol]
Fence body shown thus: [Symbol]	



APPROVED BY _____

PROJECT ENGINEER _____

No.	STATION	DESCRIPTION	NAD 83 UTM ZONE	OWNER
W01975	(S1) 645+780	Trib to North Seaskinnish Creek / S6 / RRZ=0 RMZ=20	N 6141063 E 506900	ILMB
T00861	(S1) 645+113	Forestry Road / LGGR / R07889 B-2	N 6141702 E 507085	Coast Tsimshian Res. LP
W01974	(S1) 645+022	Trib to North Seaskinnish Creek / No visible channel / RRZ=0 RMZ=0	N 6141786 E 507117	ILMB
W01973	(S1) 644+220	Trib to N Seaskinnish Creek / Non-classified drainage / RRZ=0 RMZ=0	N 6142547 E 507372	ILMB
W01972	(S1) 644+176	Trib to N Seaskinnish Creek / Non-classified drainage / RRZ=0 RMZ=0	N 6142591 E 507380	ILMB
W01971	(S1) 643+883	Trib to Kiteen River / Non-classified drainage / RRZ=0 RMZ=0	N 6142882 E 507412	ILMB
W01970	(S1) 643+421	Trib to Kiteen River / Non-classified drainage / RRZ=0 RMZ=0	N 6143340 E 507419	ILMB
W01969	(S1) 642+486	Trib to Kiteen River / No visible channel / RRZ=0 RMZ=0	N 6144269 E 507391	ILMB

Prince Rupert Gas Transmission Project

TransCanada
In business to deliver

PRINCE RUPERT GAS TRANSMISSION LTD.

PROPOSED VARIABLE WIDTH (32 to 90m) PIPELINE R/W FROM d-59-I, 93-M-5 TO c-71-D, 103-P-3 (S1), c-71-D TO d-63-D, 103-P-3 (S2 & S3) & FROM d-63-D, 103-P-3 TO a-71-J, 103-I-13 (S4) (SHEET CHAINAGE: 642+120 TO 645+893)

Unsurveyed Crown Land/Crown Land/Private Land/Nisga'a Lands & Village Lands/Lava Bed Park Cassiar District & Range 6 Coast District

100 200 300 400

The intended plot size of this plan is 864mm in width by 560mm in height when plotted at a scale of 1: 5000 (use D size sheet)

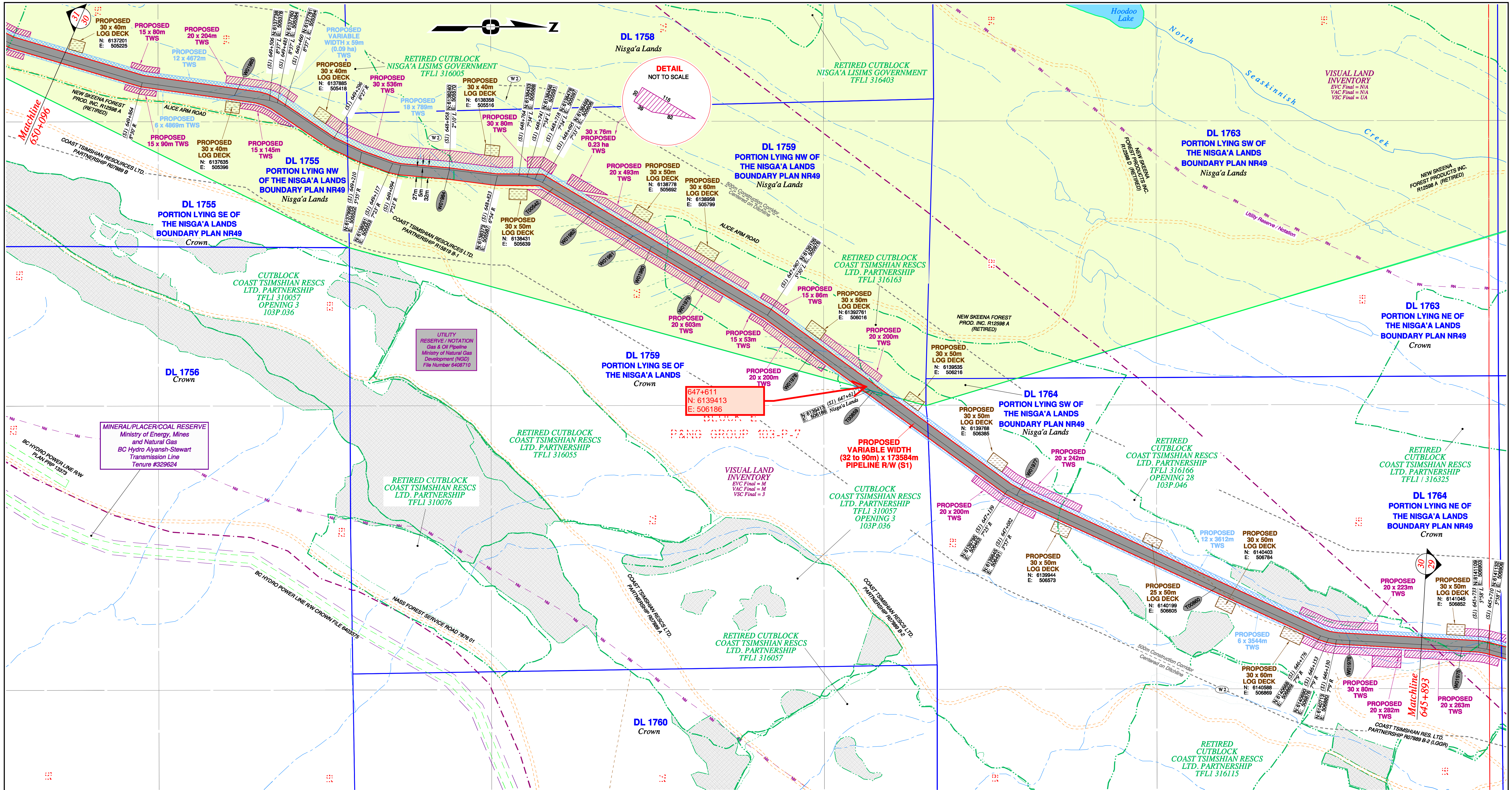
BCGS:1031.092/93.93M.042/51/52/61.103P.003/04/14/15/25/26/36/46/56/67/68/69/70

Sheet 29 of 49

FOCUS
Focus Surveys (BC) Limited Partnership
10715 - 100th Avenue, Fort St. John, BC
V1J 1Z3 250.787.0300 www.focus.ca

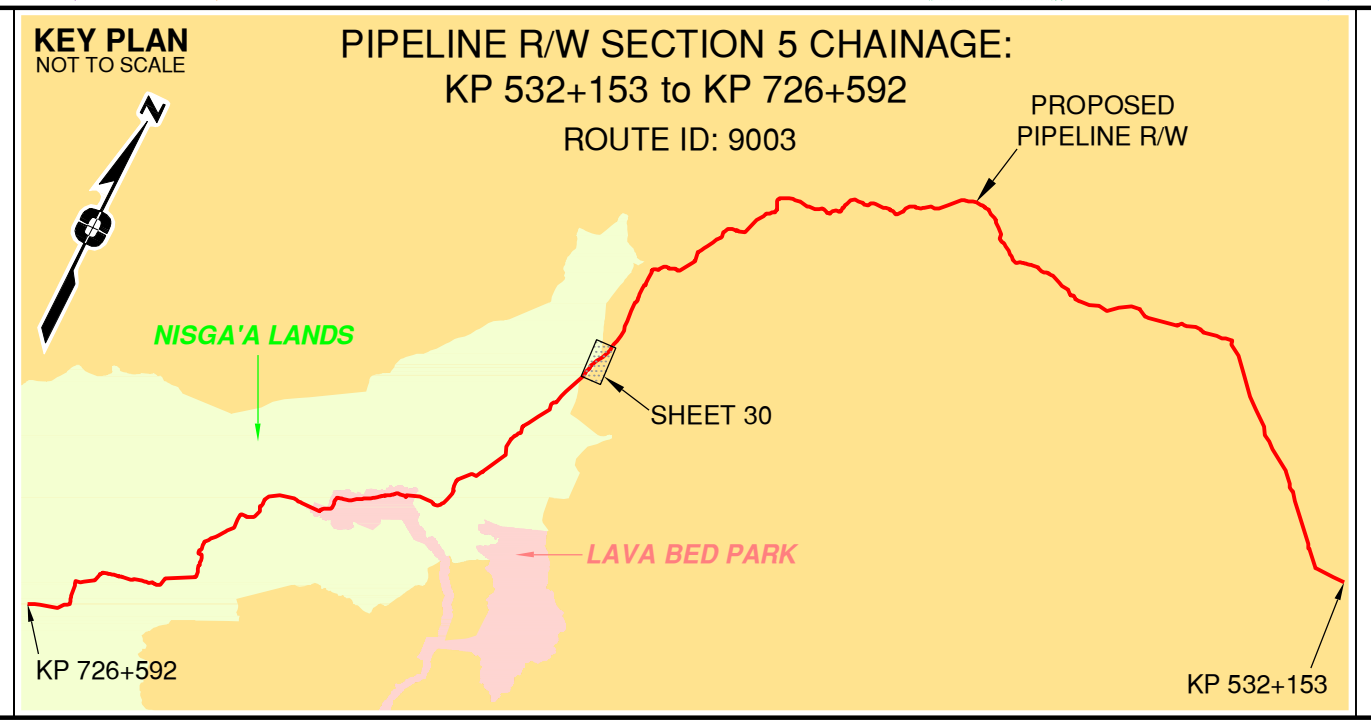
FOCUS: 130275CP05R1
AFE: 5005948
TCPL: 004776-09-ML-03-165
ePASS: 10048852

REV. 1



Rev	Revision Description	Date(Y/M/D)	By
0	Original Plan Prepared	2014/09/19	DC
1	Construction Plan Based on Rev.0 (2014/09/12) Except for New Construction Corridor: Shape, Label, Area Table & ePass Corrected Area on (S1)	2014/12/31	DC

LEGEND	
Proposed Pipeline R/W shown thus:	Fish/Wildlife Reserve bdy shown thus:
Proposed Temp. Workspaces shown thus:	Grazing Tenure bdy shown thus:
Proposed Log Decks & Storage Sites shown thus:	Mineral Claim bdy shown thus:
Right of Way shown thus:	Tree Farm Licence shown thus:
Roads shown thus:	Quarry Reserve bdy shown thus:
Highway shown thus:	Ungulate Winter Range bdy shown thus:
Railway line shown thus:	Visual Land Inventory shown thus:
Seismic line/trail shown thus:	Watershed Reserve bdy shown thus:
Recreation Tenure shown thus:	Wind Tenure bdy shown thus:
Drainages shown thus:	Woodlot bdy shown thus:
Buried cable shown thus:	Fault Line shown thus:
Buried pipe shown thus:	Misc Reserve/Notation bdy shown thus:
Overhead powerline shown thus:	Misc Licence/Permit bdy shown thus:
Riparian Reserve Zone shown thus:	Stantec Wetland / Classification shown thus:
Riparian Management Zone shown thus:	Crossings shown thus:
Forest Cover Reserve shown thus:	Old Growth Management Area shown thus:
Archaeological site shown thus:	Residences shown thus:
Agricultural Land Reserve bdy shown thus:	Nisga'a Lands shown thus:
Coal Tenure bdy shown thus:	Nisga'a Village Lands shown thus:
Cutblock bdy shown thus:	Lava Bed Park shown thus:
Fence bdy shown thus:	



APPROVED BY _____

PROJECT ENGINEER _____

No.	STATION	DESCRIPTION	NAD 83 UTM ZONE 9	OWNER
W00876	(S1) 649+750	Trail / Condition Unknown	N 6137496 E 505344	Crown
W01985	(S1) 649+605	Trib to North Seaskinnish Creek / S4 / RRZ-0 RMZ-30	N 6137640 E 505364	ILMB
W01984	(S1) 648+959	Trib to North Seaskinnish Creek / S4 / RRZ-0 RMZ-30	N 6138240 E 505570	ILMB
W00542	(S1) 648+662	Alice Arm Road / Condition Unknown R12598 A (Retired)	N 6138528 E 505623	Nisga'a Usims Government
W01982	(S1) 648+533	Trib to North Seaskinnish Creek / S4 / RRZ-0 RMZ-30	N 6138639 E 505688	ILMB
W01981	(S1) 648+402	Trib to North Seaskinnish Creek / S4 / RRZ-0 RMZ-30	N 6138752 E 505755	ILMB
W01980	(S1) 648+343	Trib to North Seaskinnish Creek / S4 / RRZ-0 RMZ-30	N 6138802 E 505785	ILMB
W01979	(S1) 648+180	Trib to North Seaskinnish Creek / S4 / RRZ-0 RMZ-30	N 6138943 E 505868	ILMB
W01978	(S1) 647+804	Trib to North Seaskinnish Creek / S4 / RRZ-0 RMZ-30	N 6139258 E 506073	ILMB
W00859	(S1) 647+605	Trail / Condition Unknown	N 6139419 E 506190	Crown
W01977	(S1) 647+110	Trib to North Seaskinnish Creek / S6 / RRZ-0 RMZ-20	N 6139821 E 506478	ILMB
W00860	(S1) 646+498	Trail / Condition Unknown	N 6140376 E 506735	Crown
W01976	(S1) 646+094	Trib to North Seaskinnish Creek / S6 / RRZ-0 RMZ-20	N 6140749 E 506882	ILMB

Prince Rupert Gas Transmission Project

PRINCE RUPERT GAS TRANSMISSION LTD.

PROPOSED VARIABLE WIDTH (32 to 90m) PIPELINE R/W FROM d-59-I, 93-M-5 TO c-71-D, 103-P-3 (S1), c-71-D TO d-63-D, 103-P-3 (S2 & S3) & FROM d-63-D, 103-P-3 TO a-71-J, 103-I-13 (S4) (SHEET CHAINAGE: 645+893 TO 650+096)

Unsurveyed Crown Land/Crown Land/Private Land/Nisga'a Lands & Village Lands/Lava Bed Park/Cassiar District & Range 5 Coast District

The intended plot size of this plan is 864mm in width by 560mm in height when plotted at a scale of 1: 5000 (use D size sheet)

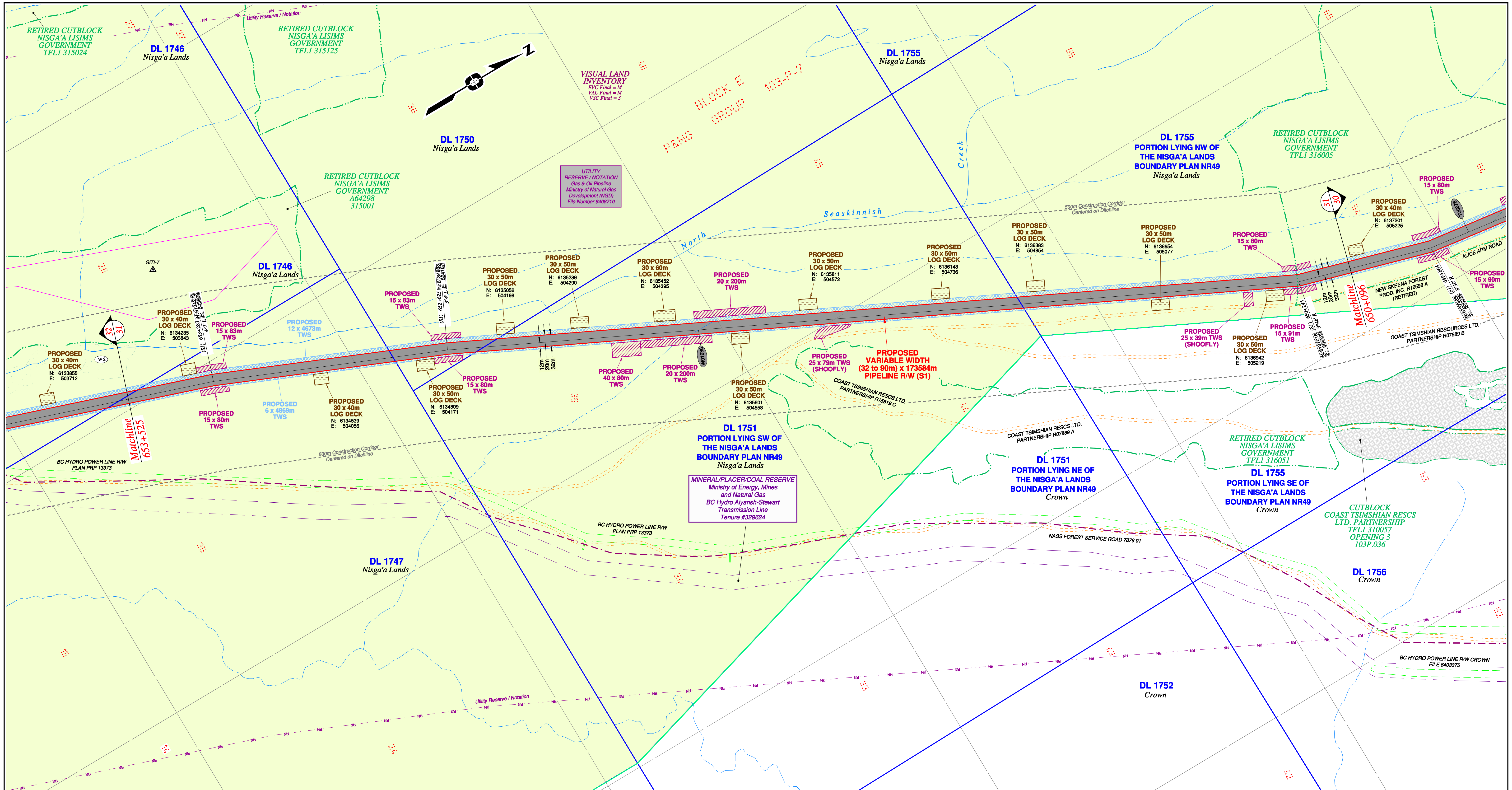
BCGS:1031.092/93.93M.042/51/52/61.103P.003/04/14/15/25/26/36/46/56/67/68/69/70

FOCUS

FOCUS: 130275CP05R1
 AFE: 5005948
 TCPL: 004776-09-ML-03-166
 ePASS: 10048852

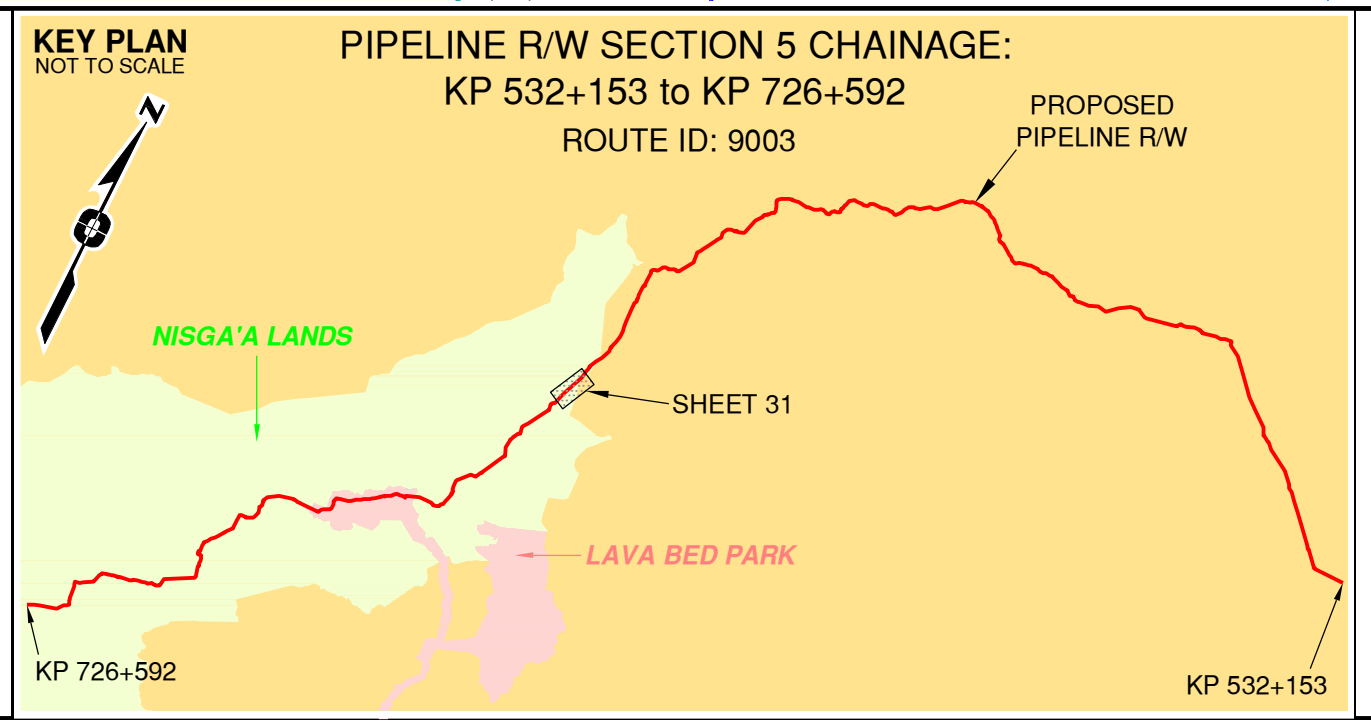
Sheet 30 of 49

13/31/2014 9:40:47 AM



Rev	Revision Description	Date(Y/M/D)	By
0	Original Plan Prepared	2014/09/19	DC
1	Construction Plan Based on Rev.0 (2014/09/12) Except for New Construction Corridor: Shape, Label, Area Table & ePASS Corrected Area on (S1)	2014/12/31	DC

LEGEND	
Proposed Pipeline R/W shown thus: [Red line]	Fish/Wildlife Reserve body shown thus: [Blue dashed line]
Proposed Temp. Workspaces shown thus: TWS / TWS [Pink hatched]	Grazing Tenure body shown thus: [Green dashed line]
Proposed Log Decks & Storage Sites shown thus: [Yellow hatched]	Mineral Claim body shown thus: [Blue dashed line]
Right of Way shown thus: [Blue dashed line]	Tree Farm Licence shown thus: [Green dashed line]
Roads shown thus: [Red dashed line]	Quarry Reserve body shown thus: [Red dashed line]
Highway shown thus: [Red dashed line]	Ungulate Winter Range body shown thus: UWR [Red dashed line]
Railway line shown thus: [Black dashed line]	Visual Land Inventory shown thus: [Red dashed line]
Seismic line/trail shown thus: [Red dashed line]	Watershed Reserve body shown thus: [Blue dashed line]
Recreation Tenure shown thus: [Red dashed line]	Woodlot body shown thus: [Blue dashed line]
Drainages shown thus: [Blue dashed line]	Fault Line shown thus: [Red dashed line]
Buried cable shown thus: [Red dashed line]	Buried pipe shown thus: [Red dashed line]
Misc. Reserve/Notation body shown thus: [Red dashed line]	Misc. Licence/Permit body shown thus: [Red dashed line]
Overhead powerline shown thus: [Red dashed line]	Stantec Wetland / Classification shown thus: [Red dashed line]
Riparian Reserve Zone shown thus: [Red dashed line]	Crossings shown thus: [Red dashed line]
Riparian Management Zone shown thus: [Red dashed line]	Forest Cover Reserve shown thus: [Red dashed line]
Archaeological site shown thus: [Red dashed line]	Residences shown thus: [Red dashed line]
Agricultural Land Reserve body shown thus: ALR [Red dashed line]	Nisga'a Lands shown thus: [Red dashed line]
Coal Tenure body shown thus: [Red dashed line]	Nisga'a Village Lands shown thus: [Red dashed line]
Cutblock body shown thus: [Red dashed line]	Lava Bed Park shown thus: [Red dashed line]
Fence body shown thus: [Red dashed line]	



APPROVED BY _____

PROJECT ENGINEER _____

No.	STATION	DESCRIPTION	OWNER
W01986	(S1) 651+924	Trib to N. Seaskinnish Creek / Non-classified drainage / RRZ-0 RMZ-0	N 6135513 E 504478 ILMB

TABLE OF CROSSINGS

Prince Rupert Gas Transmission Project

TransCanada
In business to deliver

PRINCE RUPERT GAS TRANSMISSION LTD.

PROPOSED VARIABLE WIDTH (32 to 90m) PIPELINE R/W FROM d-59-I, 93-M-5 TO c-71-D, 103-P-3 (S1), c-71-D TO d-63-D, 103-P-3 (S2 & S3) & FROM d-63-D, 103-P-3 TO a-71-J, 103-I-13 (S4) (SHEET CHAINAGE: 650+096 TO 653+525)

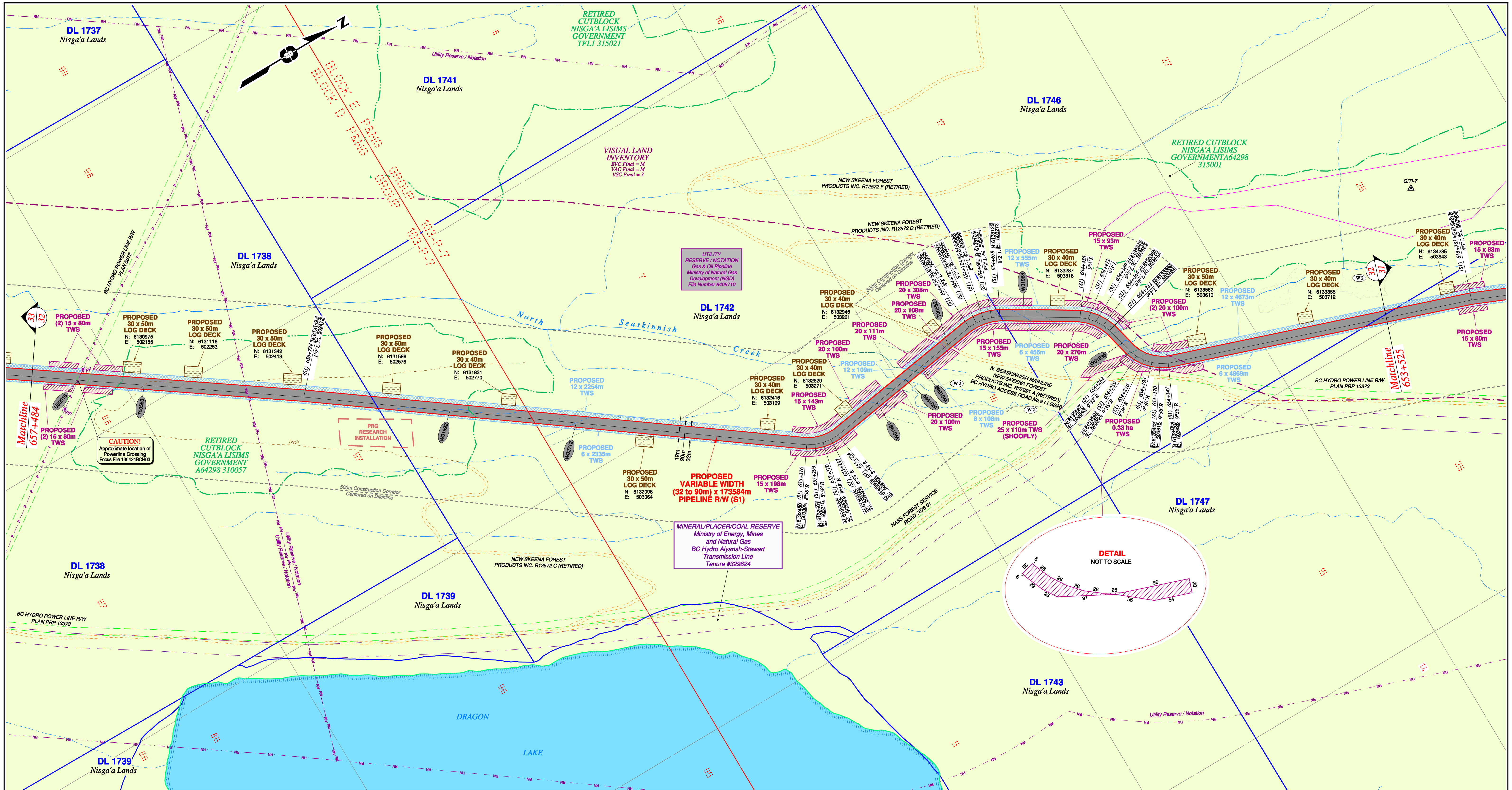
Unsurveyed Crown Land/Crown Land/Private Land/Nisga'a Lands & Village Lands/Lava Bed Park
Cassiar District & Range 5 Coast District

The intended plot size of this plan is 864mm in width by 560mm in height when plotted at a scale of 1: 5000 (use D size sheet)

BCGS: 1031.092/93.93M.042/51/52/61, 103P.003/04/14/15/25/26/36/46/56/67/68/69/70

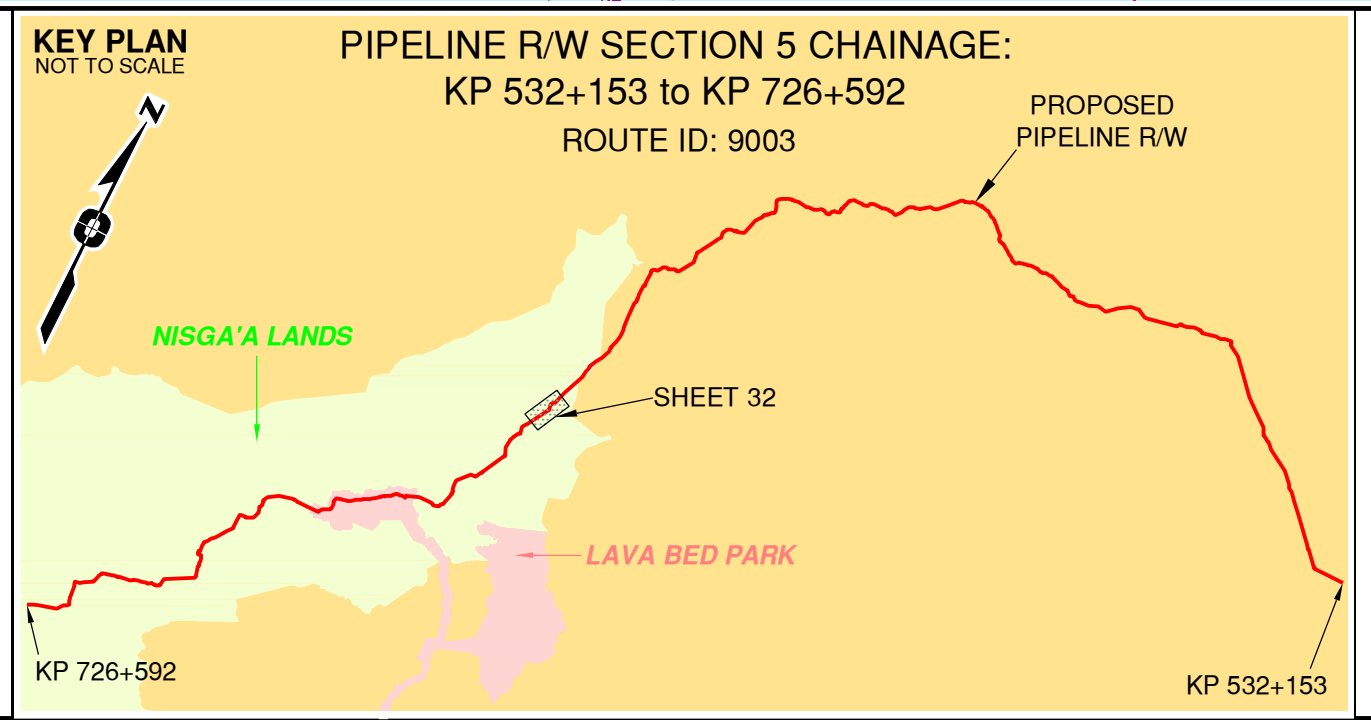
Sheet 31 of 49

FOCUS Focus Surveys (BC) Limited Partnership 10715 - 100th Avenue, Fort St. John, BC V1J 1Z3, 250.787.0300, www.focus.ca	FOCUS: 130275CP05R1 AFE: 5005948 TCPL: 004776-09-ML-03-167 ePASS: 10048852	REV. 1
--	---	------------------



Rev	Revision Description	Date(Y/M/D)	By
0	Original Plan Prepared	2014/09/19	DC
1	Construction Plan Based on Rev.0 (2014/09/12) Except for New Construction Corridor: Shape, Label, Area Table & ePass Corrected Area on (S1)	2014/12/31	DC

LEGEND	
Proposed Pipeline R/W shown thus:	Fish/Wildlife Reserve body shown thus:
Proposed Temp. Workspaces shown thus:	Grazing Tenure body shown thus:
Proposed Log Decks & Storage Sites shown thus:	Mineral Claim body shown thus:
Right of Way shown thus:	Tree Farm Licence shown thus:
Roads shown thus:	Quarry Reserve body shown thus:
Highway shown thus:	Ungulate Winter Range body shown thus:
Railway line shown thus:	Visual Land Inventory shown thus:
Seismic line/trail shown thus:	Watershed Reserve body shown thus:
Recreation Tenure shown thus:	Wind Tenure body shown thus:
Drainages shown thus:	Woodlot body shown thus:
Buried cable shown thus:	Fault Line shown thus:
Buried pipe shown thus:	Misc. Reserve/Notation body shown thus:
Overhead powerline shown thus:	Misc. Licence/Permit body shown thus:
Riparian Reserve Zone shown thus:	Stantec Wetland / Classification shown thus:
Riparian Management Zone shown thus:	Crossings shown thus:
Forest Cover Reserve shown thus:	Old Growth Management Area shown thus:
Archaeological site shown thus:	Residences shown thus:
Agricultural Land Reserve body shown thus:	Nisga'a Village Lands shown thus:
Coal Tenure body shown thus:	Lava Bed Park shown thus:
Cutblock body shown thus:	
Fence body shown thus:	



APPROVED BY _____

PROJECT ENGINEER _____

No.	STATION	DESCRIPTION	NAD 83 UTM ZONE 9	OWNER
U00016	(S1) 657+356	Overhead Powerline	N 6130828 E 502109	BC Hydro
T00553	(S1) 657+171	Trail / Condition Unknown	N 6130979 E 502215	Crown
W01992	(S1) 656+316	Trib to N. Seaskinnish Creek / Non-classified drainage / RRZ=0 RMZ=0	N 6131674 E 502713	ILMB
W02712	(S1) 655+962	Trib to North Seaskinnish Creek / S4 / RRZ=0 RMZ=30	N 6131960 E 502923	ILMB
W01991	(S1) 655+082	Trib to North Seaskinnish Creek / S4 / RRZ=0 RMZ=30	N 6132709 E 503205	ILMB
W01990	(S1) 654+980	North Seaskinnish Creek / S2 / RRZ=30 RMZ=20	N 6132809 E 503290	ILMB
W01989	(S1) 654+921	Trib to North Seaskinnish Creek / S4 / RRZ=0 RMZ=30	N 6132868 E 503281	ILMB
T00552	(S1) 654+828	Forestry Road (N. Seaskinnish Mainline) / LGRR / R07891 A (Retired)	N 6132960 E 503267	Nisga'a Lisims Government
W01988	(S1) 654+591	Trib to North Seaskinnish Creek / S4 / RRZ=0 RMZ=30	N 6133183 E 503309	ILMB
W01995	(S1) 654+294	Tributary to North Seaskinnish Creek / S2 / RRZ=30 RMZ=20	N 6133380 E 503512	ILMB

Prince Rupert Gas Transmission Project

PRINCE RUPERT GAS TRANSMISSION LTD.

PROPOSED VARIABLE WIDTH (32 to 90m) PIPELINE R/W FROM d-59-I, 93-M-5 TO c-71-D, 103-P-3 (S1), c-71-D TO d-63-D, 103-P-3 (S2 & S3) & FROM d-63-D, 103-P-3 TO a-71-J, 103-I-13 (S4) (SHEET CHAINAGE: 653+525 TO 657+484)

Unsurveyed Crown Land/Crown Land/Private Land/Nisga'a Lands & Village Lands/Lava Bed Park Cassiar District & Range 5 Coast District

The intended plot size of this plan is 854mm in width by 560mm in height when plotted at a scale of 1: 5000 (use D size sheet)

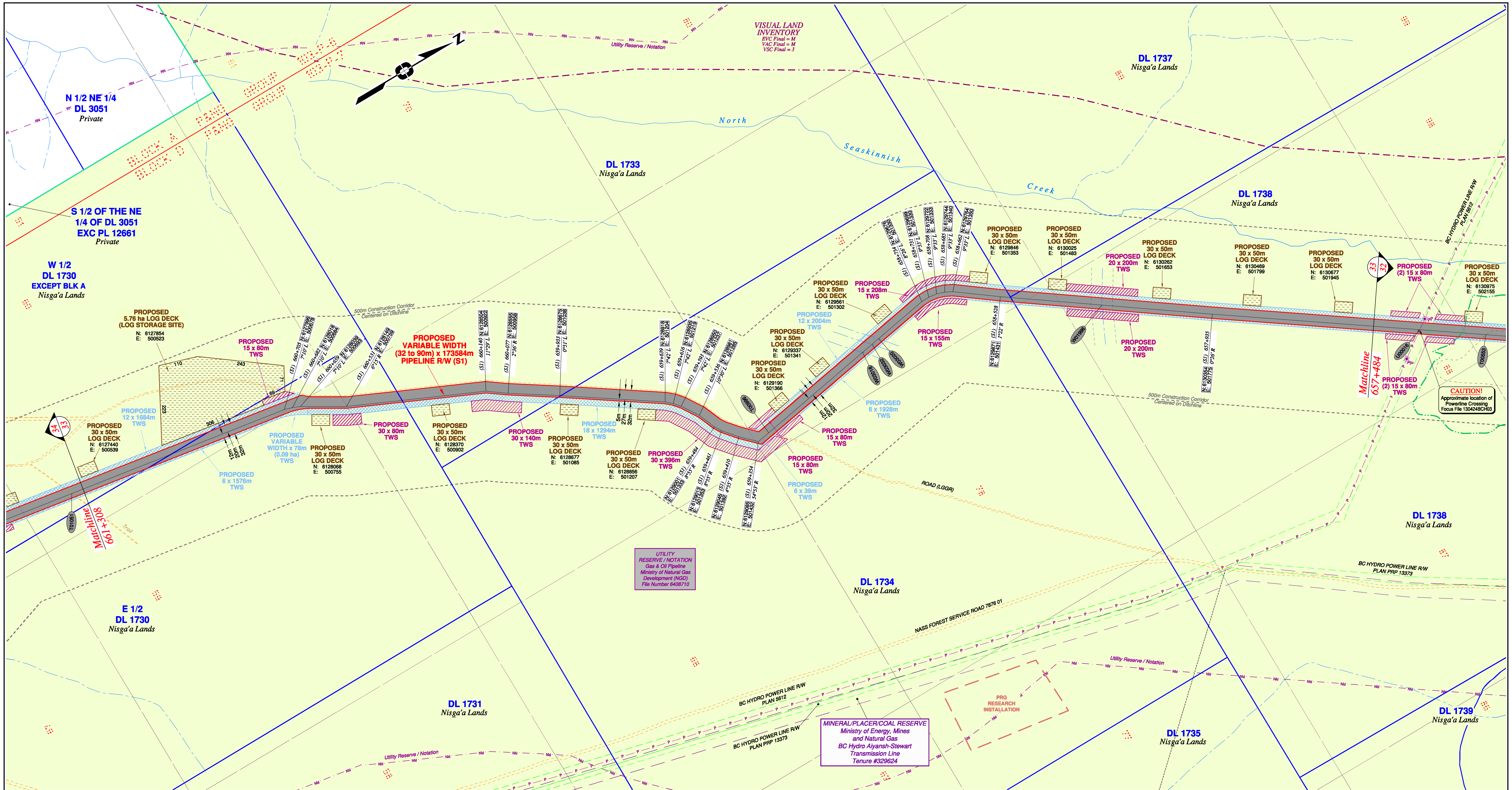
BCGS: 1031.092/93.93M.042/51/52/61.103P.003/04/14/15/25/26/36/46/56/67/68/69/70

Sheet 32 of 49

FOCUS Focus Surveys (BC) Limited Partnership
10715 - 100th Avenue, Fort St. John, BC V1J 1Z3, 250.757.0300, www.focus.ca

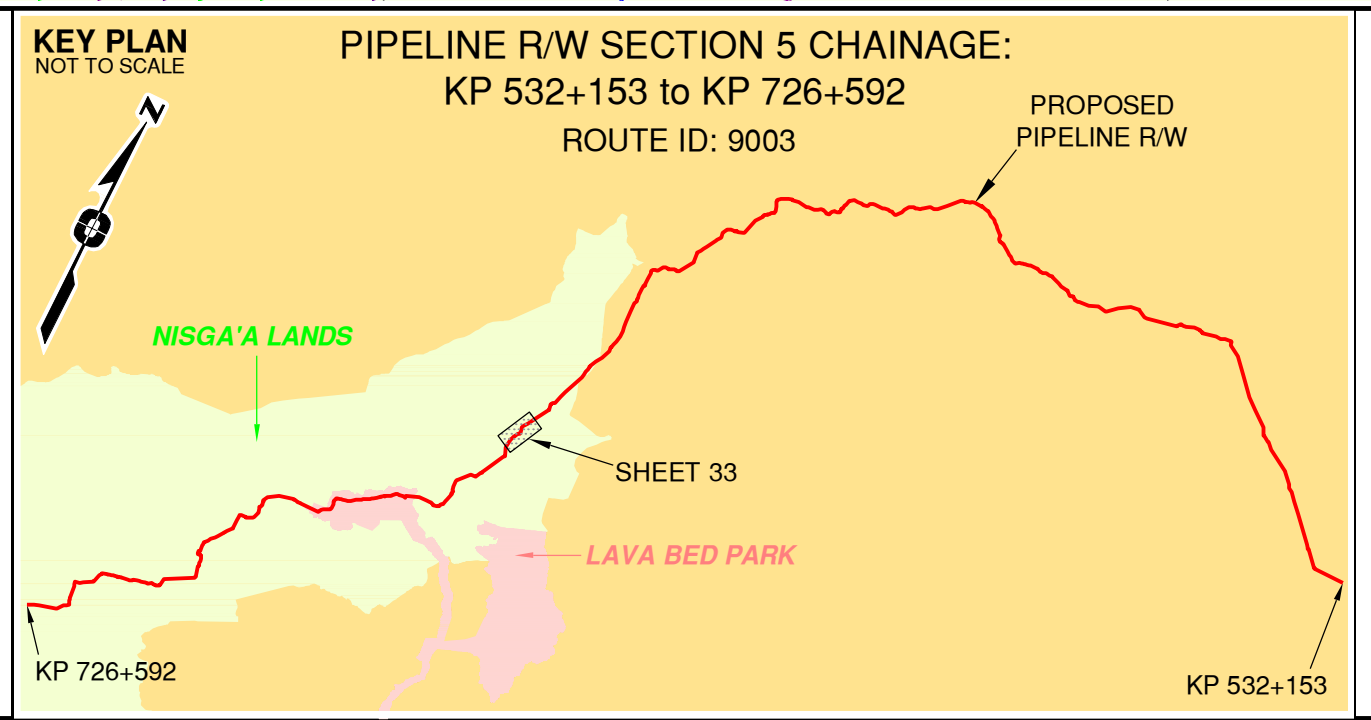
FOCUS: 130275CP05R1
AFE: 50055948
TCPL: 004776-09-ML-03-168
ePASS: 10048852

REV. 1



Rev	Revision Description	Date(Y/M/D)	By
0	Original Plan Prepared	2014/09/19	DC
1	Construction Plan Based on Rev.0 (2014/09/12) Except for New Construction Corridor: Shape, Label, Area Table & ePass Corrected Area on (S1)	2014/12/31	DC

LEGEND	
Proposed Pipeline R/W shown thus: [Red line]	Fish/Wildlife Reserve bdy shown thus: [Blue dashed line]
Proposed Temp. Workspaces shown thus: TWS / TWS	Grazing Tenure bdy shown thus: [Green dashed line]
Proposed Log Decks & Storage Sites shown thus: [Yellow rectangle]	Mineral Claim bdy shown thus: [Purple dashed line]
Right of Way shown thus: [Blue dashed line]	Tree Farm Licence shown thus: [Green dashed line]
Roads shown thus: [Orange dashed line]	Quarry Reserve bdy shown thus: [Red dashed line]
Highway shown thus: [Red dashed line]	Ungulate Winter Range bdy shown thus: [Blue dashed line]
Railway line shown thus: [Black dashed line]	Visual Land Inventory shown thus: [Red dashed line]
Seismic line/trail shown thus: [Black dashed line]	Watershed Reserve bdy shown thus: [Blue dashed line]
Recreation Tenure shown thus: [Green dashed line]	Wind Tenure bdy shown thus: [Blue dashed line]
Drainages shown thus: [Blue dashed line]	Woodlot bdy shown thus: [Green dashed line]
Buried cable shown thus: [Green dashed line]	Fault Line shown thus: [Red dashed line]
Buried pipe shown thus: [Green dashed line]	Misc Reserve/Notation bdy shown thus: [Red dashed line]
Overhead powerline shown thus: [Red dashed line]	Misc Licence/Permit bdy shown thus: [Red dashed line]
Riparian Reserve Zone shown thus: [Blue dashed line]	Stantec Wetland / Classification shown thus: [Red dashed line]
Forest Cover Reserve shown thus: [Green dashed line]	Crossings shown thus: [Red dashed line]
Archaeological site shown thus: [Red dashed line]	Old Growth Management Area shown thus: [Red dashed line]
Agricultural Land Reserve bdy shown thus: [Red dashed line]	Residences shown thus: [Red dashed line]
Coal Tenure bdy shown thus: [Red dashed line]	Nisga'a Village Lands shown thus: [Red dashed line]
Cutblock bdy shown thus: [Red dashed line]	Lava Bed Park shown thus: [Red dashed line]
Fence bdy shown thus: [Red dashed line]	



APPROVED BY _____

PROJECT ENGINEER _____

No.	STATION	DESCRIPTION	NAD 83 UTM ZONE 9	OWNER
W00996	(S1) 659+317	Road / LGGR	N 6129122 E 501425	Nisga'a Usims Government
W03018	(S1) 658+972	Trib to Kai Sgag/nist Creek / RRZ-0 RMZ=0	N 6129462 E 501367	ILMB
W03020	(S1) 658+937	Trib to Kai Sgag/nist Creek / RRZ-0 RMZ=0	N 6129496 E 501367	ILMB
W03020	(S1) 658+913	Trib to Kai Sgag/nist Creek / RRZ-0 RMZ=0	N 6129520 E 501357	ILMB
W01996	(S1) 658+245	Trib to North Seaskinnish Creek / S4 / RRZ-0 RMZ=30	N 6130102 E 501595	ILMB

TABLE OF CROSSINGS

Prince Rupert Gas Transmission Project

TransCanada
In business to deliver

PRINCE RUPERT GAS TRANSMISSION LTD.

PROPOSED VARIABLE WIDTH (32 to 90m) PIPELINE R/W FROM d-59-I, 93-M-5 TO c-71-D, 103-P-3 (S1), c-71-D TO d-63-D, 103-P-3 (S2 & S3) & FROM d-63-D, 103-P-3 TO a-71-J, 103-I-13 (S4) (SHEET CHAINAGE: 657+484 TO 661+308)

Unsurveyed Crown Land/Crown Land/Private Land/Nisga'a Lands & Village Lands/Lava Bed Park/Cassiar District & Range 5 Coast District

The intended plot size of this plan is 864mm in width by 560mm in height when plotted at a scale of 1: 5000 (use D size sheet)

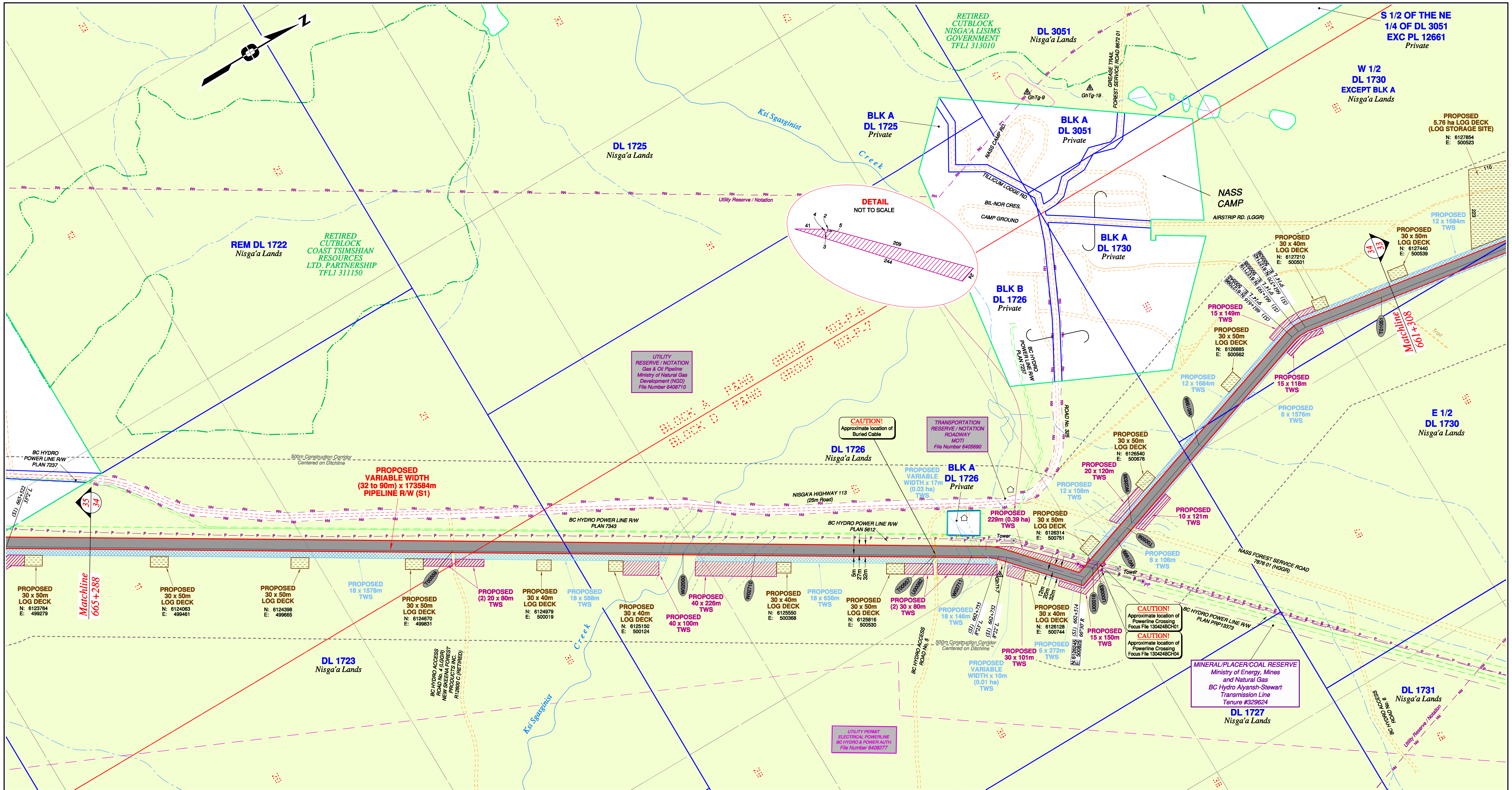
BCGS: 1031.092/93.93M.042/51/52/61.103P.0030/4/14/15/25/26/36/46/56/67/68/69/70

FOCUS
Focus Surveys (BC) Limited Partnership
10715 - 100th Avenue, Fort St. John, BC
V1J 1Z3, 250.787.0300, www.focus.ca

FOCUS: 130275CP05R1
AFCE: 5005948
TCPL: 004776-09-ML-03-169
ePASS: 10048852

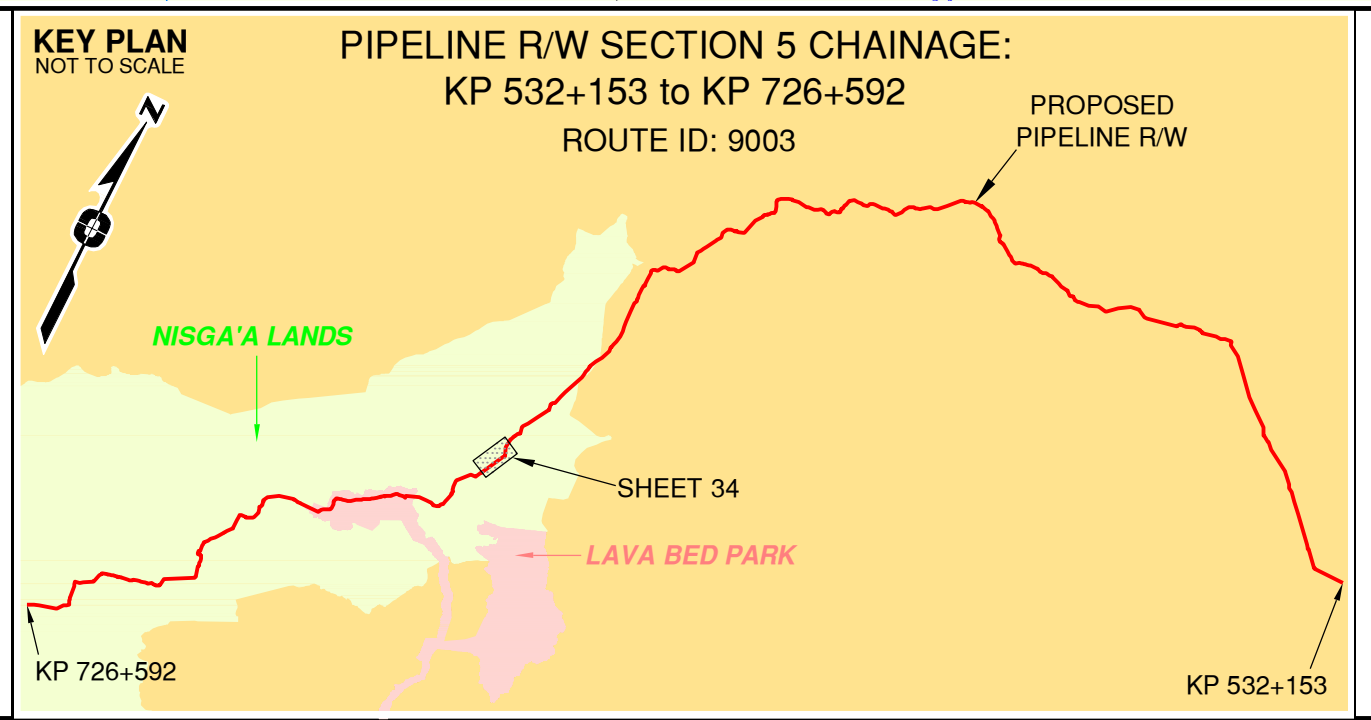
Sheet 33 of 49

REV. 1



Rev	Revision Description	Date(Y/M/D)	By
0	Original Plan Prepared	2014/09/19	DC
1	Construction Plan Based on Rev.0 (2014/09/12) Except for New Construction Corridor: Shape, Label, Area Table & ePass Corrected Area on (S1)	2014/12/31	DC

LEGEND	
Proposed Pipeline R/W shown thus: [Symbol]	Fish/Wildlife Reserve body shown thus: [Symbol]
Proposed Temp. Workspaces shown thus: TWS / TWS	Grazing Tenure body shown thus: [Symbol]
Proposed Log Decks & Storage Sites shown thus: [Symbol]	Mineral Claim body shown thus: [Symbol]
Right of Way shown thus: [Symbol]	Tree Farm Licence shown thus: [Symbol]
Roads shown thus: [Symbol]	Quarry Reserve body shown thus: [Symbol]
Highway shown thus: [Symbol]	Ungulate Winter Range body shown thus: UWR
Railway line shown thus: [Symbol]	Visual Land Inventory shown thus: [Symbol]
Seismic line/trail shown thus: [Symbol]	Watershed Reserve body shown thus: [Symbol]
Recreation Tenure shown thus: [Symbol]	Wind Tenure body shown thus: [Symbol]
Drainages shown thus: [Symbol]	Woodlot body shown thus: [Symbol]
Buried cable shown thus: [Symbol]	Fault Line shown thus: [Symbol]
Buried pipe shown thus: [Symbol]	Misc. Reserve/Notation body shown thus: [Symbol]
Overhead powerline shown thus: [Symbol]	Misc. Licence/Permit body shown thus: [Symbol]
Stantec Wetland / Classification shown thus: [Symbol]	Riparian Reserve Zone shown thus: [Symbol]
Crossings shown thus: [Symbol]	Forest Cover Reserve shown thus: [Symbol]
Old Growth Management Area shown thus: [Symbol]	Archaeological site shown thus: [Symbol]
Residences shown thus: [Symbol]	Power Pole shown thus: [Symbol]
Nisga'a Lands shown thus: [Symbol]	Agricultural Land Reserve body shown thus: ALR
Nisga'a Village Lands shown thus: [Symbol]	Coal Tenure body shown thus: [Symbol]
Lava Bed Park shown thus: [Symbol]	Cutblock body shown thus: [Symbol]
Fence body shown thus: [Symbol]	Fence body shown thus: [Symbol]



APPROVED BY _____

PROJECT ENGINEER _____

No.	STATION	DESCRIPTION	NAD 83 UTM ZONE 9	OWNER
T00559	(S1) 664+278	Forestry Road (South Seaskinnish M/L) / LGRR / R12600 C (Retired)	N 6124782 E 499855	Nisga'a Lisims Government
W02000	(S1) 663+636	Kai Sgasginist Creek / S2 / RR2-30 RMZ=20	N 6125330 E 500189	ILMB
W02710	(S1) 663+434	Trib to Kai Sgasginist Creek / S4 / RR2-0 RMZ=30	N 6125502 E 500294	ILMB
U00557	(S1) 662+936	BC Hydro Access Road No.5 / Unknown	N 6125928 E 500554	Nisga'a Lisims Government
U00082	(S1) 662+931	Utility / Buried Cable / Field Located	N 6125932 E 500556	Unknown
U002711	(S1) 662+831	Trib to Kai Sgasginist Creek / S4 / RR2-0 RMZ=30	N 6126017 E 500608	ILMB
U00018	(S1) 662+467	Overhead Powerline	N 6126289 E 500810	BC Hydro
U00083	(S1) 662+449	Overhead Powerline	N 6126306 E 500804	BC Hydro
W01999	(S1) 662+364	Trib to Kai Sgasginist Creek / No visible channel / RR2-0 RMZ=0	N 6126388 E 500777	ILMB
T00556	(S1) 662+320	Nass Forest Service Road / HGR / 7876 01	N 6126429 E 500763	Timber Sales Manager Skeena
W02638	(S1) 662+301	Trib to Kai Sgasginist Creek / RR2-0 RMZ=20	N 6126447 E 500757	ILMB
W01998	(S1) 662+015	Trib to Kai Sgasginist Creek / No visible channel / RR2-0 RMZ=0	N 6126719 E 500667	ILMB
T01051	(S1) 661+343	Trail / Condition Unknown	N 6127367 E 500575	Nisga'a Lisims Government

Prince Rupert Gas Transmission Project

TransCanada
In business to deliver

PRINCE RUPERT GAS TRANSMISSION LTD.

PROPOSED VARIABLE WIDTH (32 to 90m) PIPELINE R/W FROM d-59-I, 93-M-5 TO c-71-D, 103-P-3 (S1), c-71-D TO d-63-D, 103-P-3 (S2 & S3) & FROM d-63-D, 103-P-3 TO a-71-J, 103-I-13 (S4) (SHEET CHAINAGE: 661+308 TO 665+288)

Unsurveyed Crown Land/Crown Land/Private Land/Nisga'a Lands & Village Lands/Lava Bed Park/Cassiar District & Range 5 Coast District

The intended plot size of this plan is 864mm in width by 560mm in height when plotted at a scale of 1: 5000 (use D size sheet)

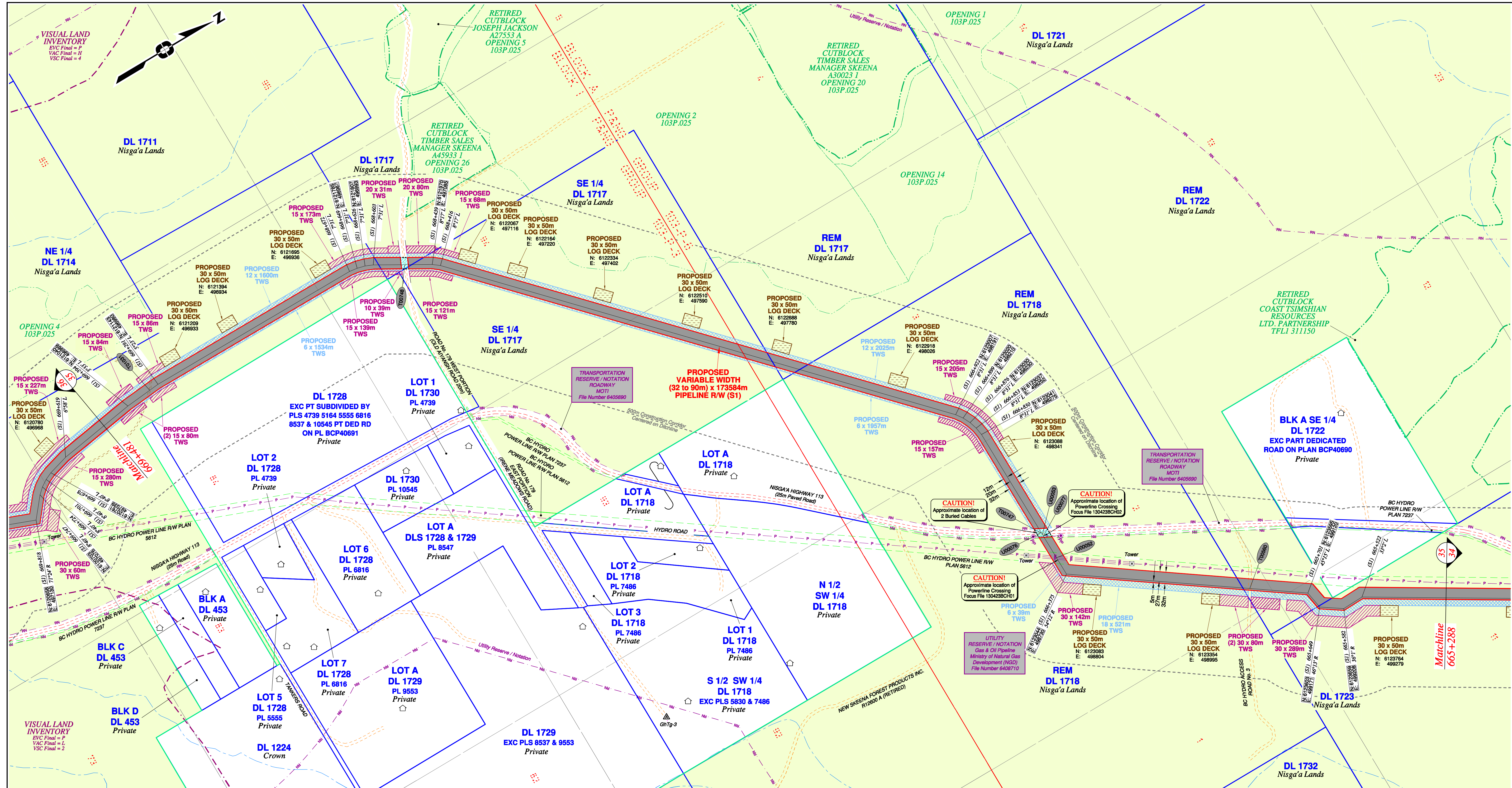
BCGS: 1031.092/93.93M.042/51/52/61, 103P.003/04/14/15/25/26/36/46/56/67/68/69/70

Sheet 34 of 49

FOCUS
Focus Surveys (BC) Limited Partnership
10715 - 100th Avenue Fort St. John BC V1J 2Z3 250.757.0300 www.focus.ca

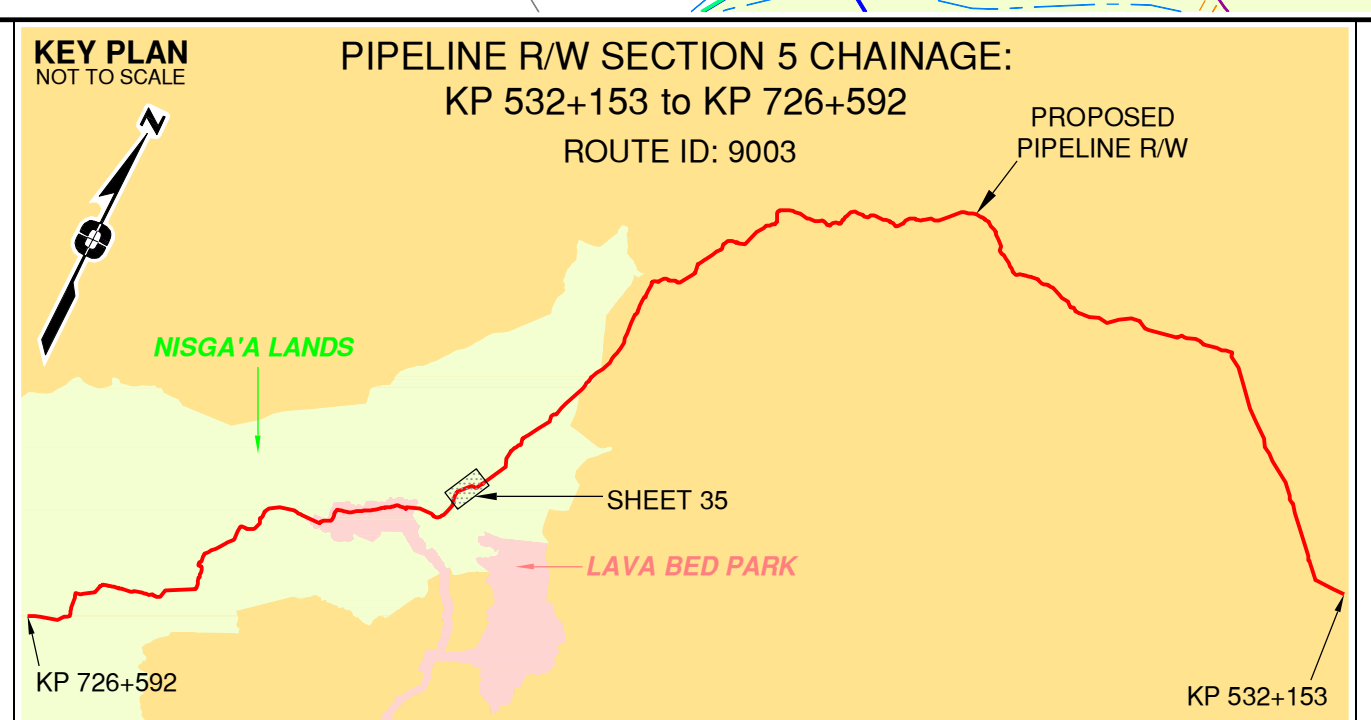
FOCUS: 130275CP05R1
AFE: 5005948
TCPL: 004776-09-ML-03-170
ePASS: 10048852

REV. 1



Rev	Revision Description	Date(Y/M/D)	By
0	Original Plan Prepared	2014/09/19	DC
1	Construction Plan Based on Rev.0 (2014/09/12) Except for New Construction Corridor: Shape, Label, Area Table & ePass Corrected Area on (S1)	2014/12/31	DC

LEGEND	
Proposed Pipeline R/W shown thus: [Red line with dashed borders]	Fish/Wildlife Reserve bdy shown thus: [Blue dashed line]
Proposed Temp. Workspaces shown thus: TWS / TWS	Grazing Tenure bdy shown thus: [Green dashed line]
Proposed Log Decks & Storage Sites shown thus: [Yellow box]	Mineral Claim bdy shown thus: [Purple dashed line]
Right of Way shown thus: [Blue dashed line]	Tree Farm Licence shown thus: [Green dashed line]
Roads shown thus: [Red dashed line]	Quarry Reserve bdy shown thus: [Blue dashed line]
Highway shown thus: [Red dashed line]	Ungulate Winter Range bdy shown thus: [Blue dashed line]
Railway line shown thus: [Black dashed line]	Visual Land Inventory shown thus: [Blue dashed line]
Seismic line/trail shown thus: [Blue dashed line]	Watershed Reserve bdy shown thus: [Blue dashed line]
Recreation Tenure shown thus: [Blue dashed line]	Wind Tenure bdy shown thus: [Blue dashed line]
Drainages shown thus: [Blue dashed line]	Woodlot bdy shown thus: [Blue dashed line]
Buried cable shown thus: [Blue dashed line]	Fault Line shown thus: [Blue dashed line]
Buried pipe shown thus: [Blue dashed line]	Misc Reserve/Notation bdy shown thus: [Blue dashed line]
Overhead powerline shown thus: [Blue dashed line]	Misc Licence/Permit bdy shown thus: [Blue dashed line]
Riparian Reserve Zone shown thus: [Blue dashed line]	Riparian Reserve Zone shown thus: [Blue dashed line]
Crossings shown thus: [Blue dashed line]	Old Growth Management Area shown thus: [Blue dashed line]
Forest Cover Reserve shown thus: [Blue dashed line]	Residences shown thus: [Blue dashed line]
Archaeological site shown thus: [Blue dashed line]	Nisga'a Lands shown thus: [Blue dashed line]
Agricultural Land Reserve bdy shown thus: [Blue dashed line]	Nisga'a Village Lands shown thus: [Blue dashed line]
Coal Tenure bdy shown thus: [Blue dashed line]	Lava Bed Park shown thus: [Blue dashed line]
Cutback bdy shown thus: [Blue dashed line]	Fence bdy shown thus: [Blue dashed line]



No.	STATION	DESCRIPTION	OWNER
101031	(S1) 669+320	Trail / Condition Unknown	N 6121114 E 496982 Nisga'a Lisims Government
100748	(S1) 668+516	Old Alyansh Road FSR / Unknown	MOTI
U00076	(S1) 666+511	Utility / Buried Cable / Field Located	N 6123043 E 498595 Unknown
700747	(S1) 666+509	Nisga'a Highway 113 / Paved	N 6123048 E 498597 MOTI
U00053	(S1) 666+505	Utility / Buried Cable / Field Located	N 6123043 E 498601 Unknown
U00077	(S1) 666+499	Overhead Powerline	N 6123043 E 498607 BC Hydro
U00052	(S1) 666+429	Overhead Powerline	N 6123462 E 499026 BC Hydro
100560	(S1) 665+863	BC Hydro Access Road No.3 / Unknown	N 6123462 E 499026 Nisga'a Lisims Government

Prince Rupert Gas Transmission Project

TransCanada
In business to deliver

PRINCE RUPERT GAS TRANSMISSION LTD.

PROPOSED VARIABLE WIDTH (32 to 90m) PIPELINE R/W FROM d-59-I, 93-M-5 TO c-71-D, 103-P-3 (S1), c-71-D TO d-63-D, 103-P-3 (S2 & S3) & FROM d-63-D, 103-P-3 TO a-71-J, 103-I-13 (S4) (SHEET CHAINAGE: 665+288 TO 669+481)

Unsurveyed Crown Land/Crown Land/Private Land/Nisga'a Lands & Village Lands/Lava Bed Park/Cassiar District & Range 5 Coast District

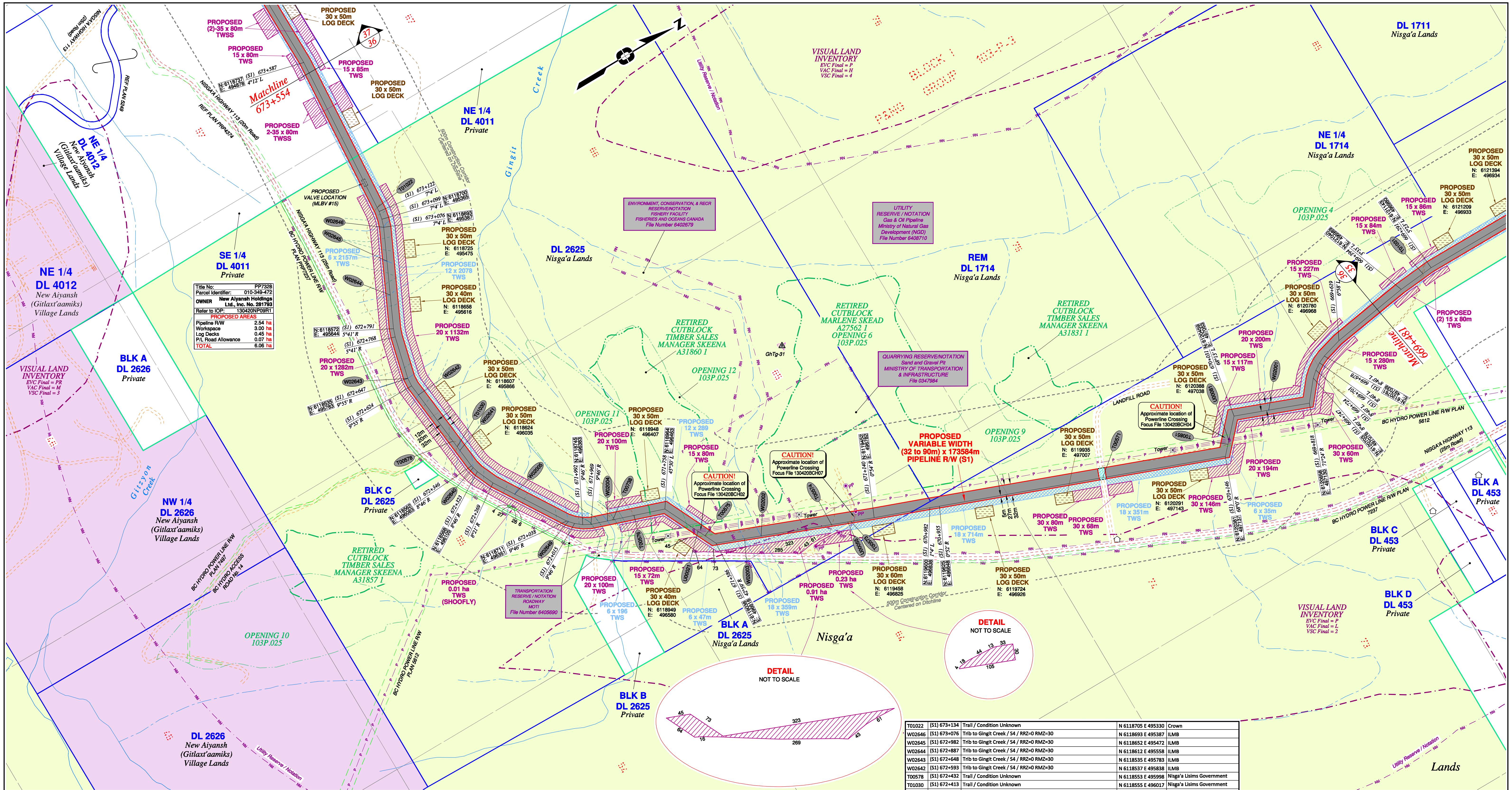
The intended plot size of this plan is 864mm in width by 560mm in height when plotted at a scale of 1: 5000 (use D size sheet)

BCGS: 1031.092/93.93M.042/51/52/61, 103P.003/04/14/15/25/26/36/46/56/57/67/68/69/70

FOCUS	130275CP05R1	REV.
AFE:	5005948	
TCPL:	004776-09-ML-03-171	1
ePASS:	10048852	

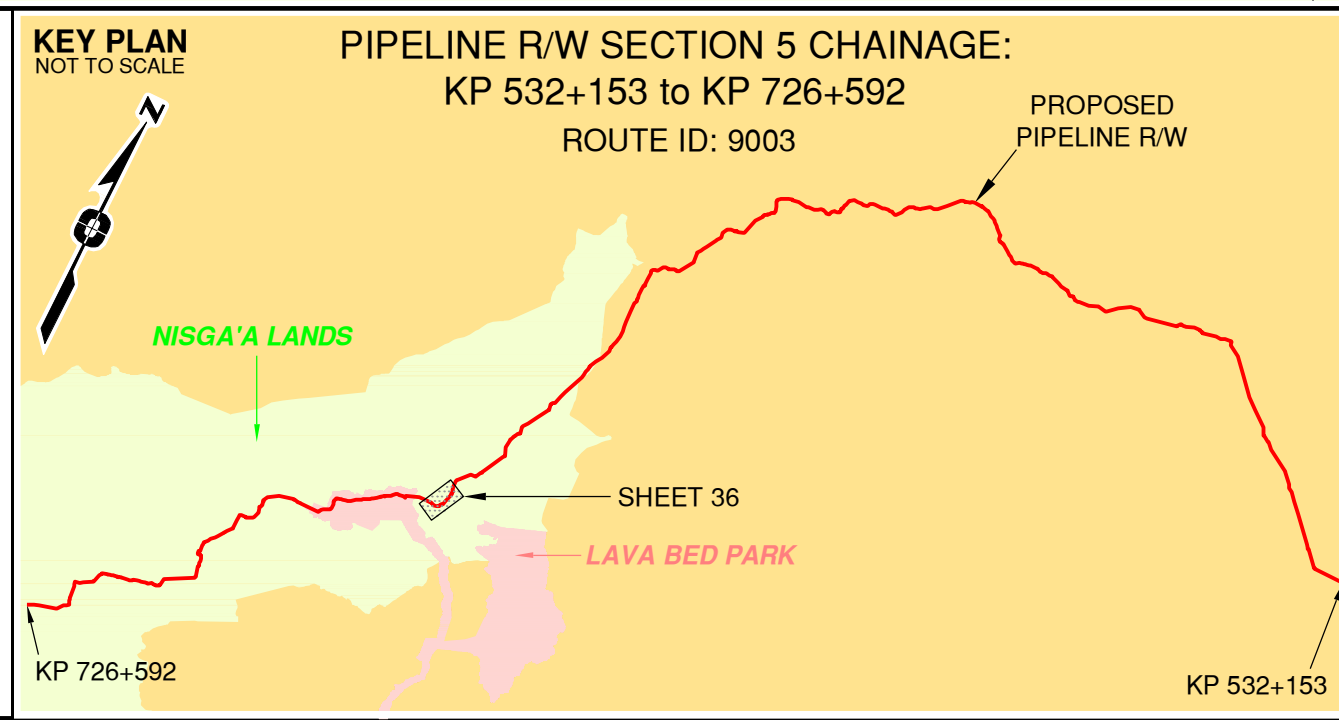
FOCUS
Focus Surveys (BC) Limited Partnership
10715 - 100th Avenue, Fort St. John BC
V1J 1Z3 250.787.0300 www.focus.ca

Sheet 35 of 49
12/31/2014 9:19:56 AM



Rev	Revision Description	Date(Y/M/D)	By
0	Original Plan Prepared	2014/09/19	DC
1	Construction Plan Based on Rev.0 (2014/09/12) Except for New Construction Corridor: Shape, Label, Area Table & ePASS Corrected Area on (S1)	2014/12/31	DC


LEGEND	
Proposed Pipeline R/W shown thus: [Symbol]	Fish/Wildlife Reserve body shown thus: [Symbol]
Proposed Temp. Workspaces shown thus: TWS / TWS	Grazing Tenure body shown thus: [Symbol]
Proposed Log Decks & Storage Sites shown thus: [Symbol]	Mineral Claim body shown thus: [Symbol]
Right of Way shown thus: [Symbol]	Tree Farm Licence shown thus: [Symbol]
Roads shown thus: [Symbol]	Quarry Reserve body shown thus: [Symbol]
Highway shown thus: [Symbol]	Ungulate Winter Range body shown thus: UWR
Railway line shown thus: [Symbol]	Visual Land Inventory shown thus: [Symbol]
Seismic line/trail shown thus: [Symbol]	Watershed Reserve body shown thus: [Symbol]
Recreation Tenure shown thus: [Symbol]	Wind Tenure body shown thus: [Symbol]
Drainages shown thus: [Symbol]	Woodlot body shown thus: WL
Buried cable shown thus: [Symbol]	Fault Line shown thus: [Symbol]
Buried pipe shown thus: [Symbol]	Misc. Reserve/Notation body shown thus: [Symbol]
Overhead powerline shown thus: [Symbol]	Misc. Licence/Permit body shown thus: [Symbol]
Riparian Reserve Zone shown thus: [Symbol]	Stantec Wetland / Classification shown thus: [Symbol]
Riparian Management Zone shown thus: [Symbol]	Crossings shown thus: [Symbol]
Forest Cover Reserve shown thus: [Symbol]	Old Growth Management Area shown thus: [Symbol]
Archaeological site shown thus: [Symbol]	Residences shown thus: [Symbol] Power Pole shown thus: [Symbol]
Agricultural Land Reserve body shown thus: ALR	Nisga'a Lands shown thus: [Symbol]
Coal Tenure body shown thus: [Symbol]	Nisga'a Village Lands shown thus: [Symbol]
Cutblock body shown thus: [Symbol]	Lava Bed Park shown thus: [Symbol]
Fence body shown thus: [Symbol]	



APPROVED BY _____

PROJECT ENGINEER _____

No.	STATION	DESCRIPTION	OWNER
T01022	(S1) 673+134	Trail / Condition Unknown	N 6118705 E 495330 Crown
W02646	(S1) 673+076	Tribe to Gingit Creek / S4 / RR2-0 RMZ-30	N 6118693 E 495387 ILMB
W02645	(S1) 672+982	Tribe to Gingit Creek / S4 / RR2-0 RMZ-30	N 6118652 E 495472 ILMB
W02644	(S1) 672+887	Tribe to Gingit Creek / S4 / RR2-0 RMZ-30	N 6118612 E 495558 ILMB
W02643	(S1) 672+648	Tribe to Gingit Creek / S4 / RR2-0 RMZ-30	N 6118535 E 495783 ILMB
W02642	(S1) 672+593	Tribe to Gingit Creek / S4 / RR2-0 RMZ-30	N 6118537 E 495838 ILMB
W02078	(S1) 672+432	Trail / Condition Unknown	Nisga'a Lisims Government
T01030	(S1) 672+413	Trail / Condition Unknown	N 6118553 E 495998 Nisga'a Lisims Government
W02641	(S1) 672+400	Tribe to Gingit Creek / S4 / RR2-0 RMZ-30	N 6118557 E 496029 ILMB
W02640	(S1) 672+339	Tribe to Gingit Creek / S4 / RR2-0 RMZ-30	N 6118564 E 496090 ILMB
W02005	(S1) 672+201	Tribe to Gingit Creek / S4 / RR2-0 RMZ-30	N 6118626 E 496213 ILMB
W02649	(S1) 672+034	Tribe to Gingit Creek / S4 / RR2-0 RMZ-30	N 6118714 E 496354 ILMB
W02004	(S1) 671+922	Gingit Creek / S3 / RR2-20 RMZ-20	N 6118810 E 496409 ILMB
T00738	(S1) 671+907	Trail / Condition Unknown	N 6118824 E 496414 Crown
T00576	(S1) 671+846	Trail / Condition Unknown	N 6118881 E 496434 Nisga'a Lisims Government
U00021	(S1) 671+648	Overhead Powerline	N 6119012 E 496563 BC Hydro
T00575	(S1) 671+624	Trail / Condition Unknown	N 6119022 E 496584 Nisga'a Lisims Government
W02003	(S1) 671+506	Tribe to Gingit Creek / Non-classified drainage / RR2-0 RMZ-0	N 6119112 E 496647 ILMB
W02002	(S1) 671+460	Tribe to Gingit Creek / No visible channel / RR2-0 RMZ-0	N 6119156 E 496665 ILMB
U00074	(S1) 671+261	Trail / Condition Unknown	N 6119341 E 496738 Nisga'a Lisims Government
U00055	(S1) 671+216	Overhead Powerline	N 6119399 E 496761 BC Hydro
T00573	(S1) 671+206	Road / Condition Unknown	N 6119391 E 496758 Nisga'a Lisims Government
T00571	(S1) 670+494	Landfill Road / Condition Unknown	N 6120057 E 497013 MOTI
T00081	(S1) 670+112	Trail / Condition Unknown	N 6120404 E 497112 Nisga'a Lisims Government
U00008	(S1) 670+101	Overhead Powerline	N 6120412 E 497104 BC Hydro
W02001	(S1) 669+934	Tribe to Gingit Creek / Non-classified drainage / RR2-0 RMZ-0	N 6120551 E 497089 ILMB

Prince Rupert Gas Transmission Project  **TransCanada**
In business to deliver

PRINCE RUPERT GAS TRANSMISSION LTD.

PROPOSED VARIABLE WIDTH (32 to 90m) PIPELINE R/W FROM d-59-I, 93-M-5 TO c-71-D, 103-P-3 (S1), c-71-D TO d-63-D, 103-P-3 (S2 & S3) & FROM d-63-D, 103-P-3 TO a-71-J, 103-I-13 (S4) (SHEET CHAINAGE: 669+481 TO 673+554)

Unsurveyed Crown Land/Crown Land/Private Land/Nisga'a Lands & Village Lands/Lava Bed Park
Cassiar District & Range 5 Coast District

The intended plot size of this plan is 864mm in width by 560mm in height when plotted at a scale of 1: 5000 (use D size sheet)

BCGS: 1031-002/93-93M.042/51/52/61, 103P.003/04/14/15/25/26/36/46/56/67/67/68/69/70

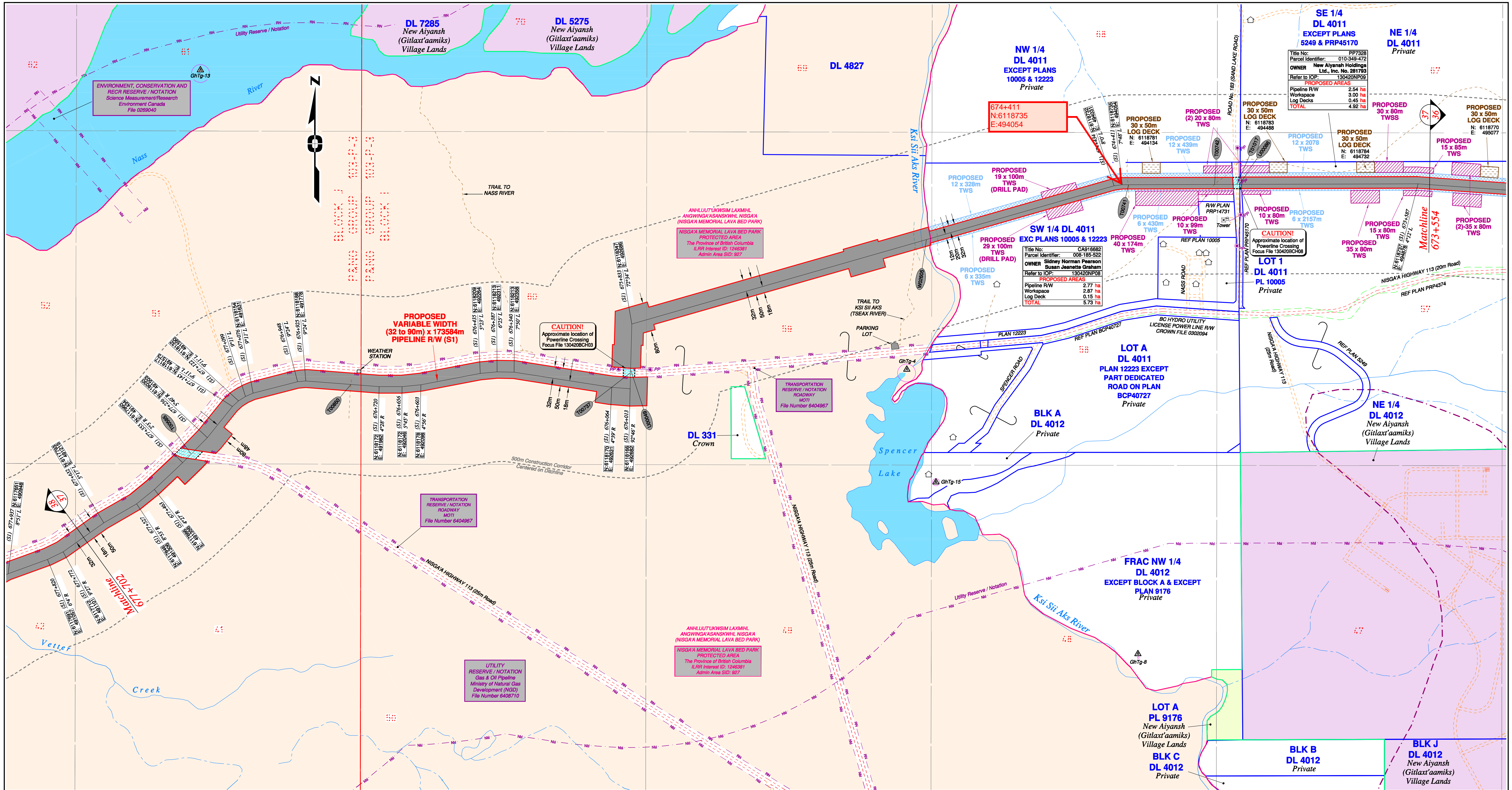
100 200 300 400

FOCUS Focus Surveys (BC) Limited Partnership
10715 - 100th Avenue Fort St. John BC
V1J 1Z3 250.787.0300 www.focus.ca

FOCUS: 130275CP05R1
AFE: 5005948
TCPL: 004776-09-ML-03-172
ePASS: 10048852

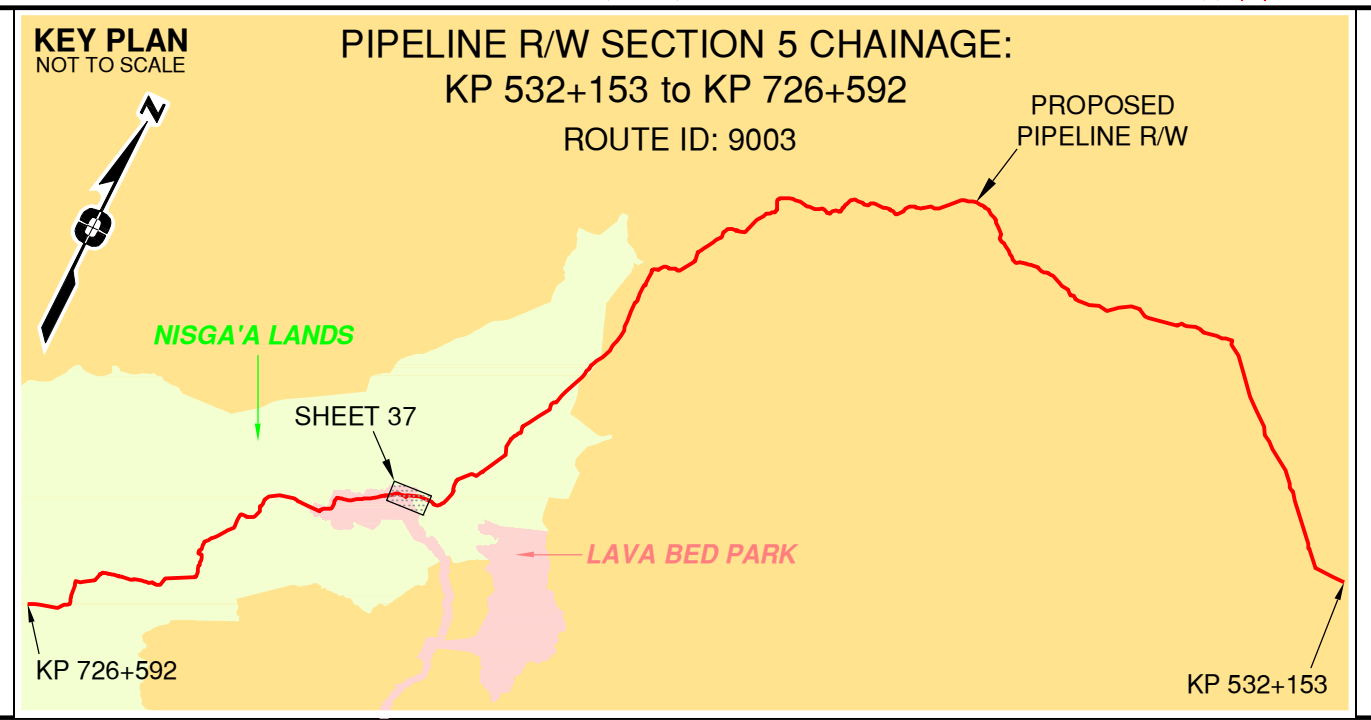
Sheet 36 of 49

13/31/2014 9:19:59 AM



Rev	Revision Description	Date(Y/M/D)	By
0	Original Plan Prepared	2014/09/19	DC
1	Construction Plan Based on Rev.0 (2014/09/12) Except for New Construction Corridor: Shape, Label, Area Table & ePass Corrected Area on (S1)	2014/12/31	DC

LEGEND	
Proposed Pipeline R/W shown thus: [Symbol]	Fish/Wildlife Reserve body shown thus: [Symbol]
Proposed Temp. Workspaces shown thus: TWS / TWS	Grazing Tenure body shown thus: [Symbol]
Proposed Log Decks & Storage Sites shown thus: [Symbol]	Mineral Claim body shown thus: [Symbol]
Right of Way shown thus: [Symbol]	Tree Farm Licence shown thus: [Symbol]
Roads shown thus: [Symbol]	Quarry Reserve body shown thus: [Symbol]
Highway shown thus: [Symbol]	Ungulate Winter Range body shown thus: UWR
Railway line shown thus: [Symbol]	Visual Land Inventory shown thus: [Symbol]
Seismic line/trail shown thus: [Symbol]	Watershed Reserve body shown thus: [Symbol]
Recreation Tenure shown thus: [Symbol]	Wind Tenure body shown thus: [Symbol]
Drainages shown thus: [Symbol]	Woodlot body shown thus: [Symbol]
Buried cable shown thus: [Symbol]	Fault Line shown thus: [Symbol]
Buried pipe shown thus: [Symbol]	Misc Reserve/Notation body shown thus: [Symbol]
Overhead powerline shown thus: [Symbol]	Misc Licence/Permit body shown thus: [Symbol]
Riparian Reserve Zone shown thus: [Symbol]	Old Growth Management Area shown thus: [Symbol]
Crossings shown thus: [Symbol]	Residences shown thus: [Symbol]
Forest Cover Reserve shown thus: [Symbol]	Nisga'a Lands shown thus: [Symbol]
Archaeological site shown thus: [Symbol]	Nisga'a Village Lands shown thus: [Symbol]
Agricultural Land Reserve body shown thus: ALR	Lava Bed Park shown thus: [Symbol]
Coal Tenure body shown thus: [Symbol]	
Cutblock body shown thus: [Symbol]	
Fence body shown thus: [Symbol]	



APPROVED BY _____

PROJECT ENGINEER _____

No.	STATION	DESCRIPTION	NAD 83 UTM ZONE	OWNER
U00585	(S1) 677+321	Nisga'a Highway 113 / Paved Road	N 6117984 E 491458	MOTI
U00850	(S1) 676+799	Trail / Condition Unknown	N 6118178 E 491903	Nisga'a Usims Government
U00737	(S1) 675+970	Nisga'a Highway 113 / Paved Road	N 6118211 E 492683	MOTI
U00049	(S1) 675+960	Overhead Powerline	N 6118220 E 492683	BC Hydro
W02605	(S1) 674+979	Ki Si Aks River / S1 / RRZ-50 RMZ-20	N 6118582 E 493508	ILMB
T00741	(S1) 674+394	Trail / Condition Unknown	N 6118735 E 494071	Nisga'a Usims Government
T00742	(S1) 674+154	Trail / Condition Unknown	N 6118735 E 494312	Nisga'a Usims Government
T01017	(S1) 674+092	Road No.183 (Sand Lake Road)	N 6118736 E 494380	MOTI
U00086	(S1) 674+085	Overhead Powerline	N 6118736 E 494380	BC Hydro

Prince Rupert Gas Transmission Project

TransCanada
In business to deliver

PRINCE RUPERT GAS TRANSMISSION LTD.

PROPOSED VARIABLE WIDTH (32 to 90m) PIPELINE R/W FROM d-59-I, 93-M-5 TO c-71-D, 103-P-3 (S1), c-71-D TO d-63-D, 103-P-3 (S2 & S3) & FROM d-63-D, 103-P-3 TO a-71-J, 103-I-13 (S4) (SHEET CHAINAGE: 673+554 TO 677+702)

Unsurveyed Crown Land/Crown Land/Private Land/Nisga'a Lands & Village Lands/Lava Bed Park/Cassiar District & Range 5 Coast District

The intended plot size of this plan is 864mm in width by 560mm in height when plotted at a scale of 1: 5000 (use D size sheet)

BCGS: 1031.092;93.93M.042;51;52;61,103P.003;04;14;15;25;26;36;46;56;57;67;68;69;70

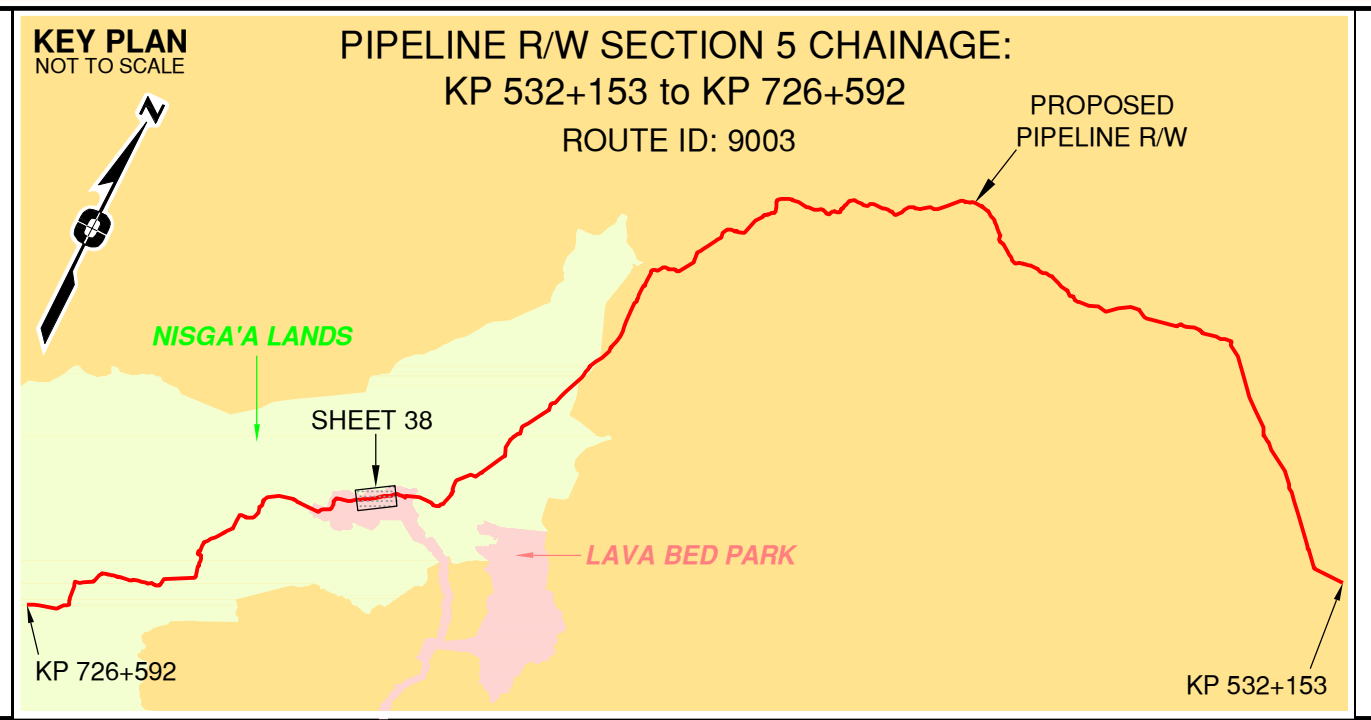
Sheet 37 of 49

FOCUS Focus Surveys (BC) Limited Partnership 10715 - 100th Avenue, Fort St. John, BC V1J 1Z3 - 250.787.0300, www.focus.ca	FOCUS: 130275CP05R1 AFC: 5005948 TCPL: 004776-09-ML-03-173 ePASS: 10048852	REV. 1
---	---	------------------



Rev	Revision Description	Date(Y.M.D)	By
0	Original Plan Prepared	2014/09/19	DC
1	Construction Plan Based on Rev.0 (2014/09/12) Except for New Construction Corridor: Shape, Label, Area Table & ePass Corrected Area on (S1)	2014/12/31	DC

LEGEND	
Proposed Pipeline R/W shown thus:	Fish/Wildlife Reserve bdy shown thus:
Proposed Temp. Workspaces shown thus:	Grazing Tenure bdy shown thus:
Proposed Log Decks & Storage Sites shown thus:	Mineral Claim bdy shown thus:
Right of Way shown thus:	Tree Farm Licence shown thus:
Roads shown thus:	Quarry Reserve bdy shown thus:
Highway shown thus:	Ungulate Winter Range bdy shown thus:
Railway line shown thus:	Visual Land Inventory shown thus:
Seismic line/trail shown thus:	Watershed Reserve bdy shown thus:
Drainages shown thus:	Recreation Tenure bdy shown thus:
Buried cable shown thus:	Woodlot bdy shown thus:
Buried pipe shown thus:	Fault Line shown thus:
Overhead powerline shown thus:	Misc Reserve/Notation bdy shown thus:
Stantec Wetland / Classification shown thus:	Misc Licence/Permit bdy shown thus:
Riparian Management Zone shown thus:	Riparian Reserve Zone shown thus:
Forest Cover Reserve shown thus:	Crossings shown thus:
Archaeological site shown thus:	Old Growth Management Area shown thus:
Agricultural Land Reserve bdy shown thus:	Residences shown thus:
Coal Tenure bdy shown thus:	Nisga'a Lands shown thus:
Cutblock bdy shown thus:	Lava Bed Park shown thus:
Fence bdy shown thus:	



APPROVED BY _____

PROJECT ENGINEER _____

No.	STATION	DESCRIPTION	NAD 83 UTM ZONE	ILMB	OWNER
W02628	(S1) 678+006	Vetter Creek / Non-classified drainage / RRZ=0 RMZ=0	N 6117618 E 490888	ILMB	

TABLE OF CROSSINGS

Prince Rupert Gas Transmission Project

TransCanada
In business to deliver

PRINCE RUPERT GAS TRANSMISSION LTD.

PROPOSED VARIABLE WIDTH (32 to 90m) PIPELINE R/W FROM d-59-I, 93-M-5 TO c-71-D, 103-P-3 (S1), c-71-D TO d-63-D, 103-P-3 (S2 & S3) & FROM d-63-D, 103-P-3 TO a-71-J, 103-I-13 (S4)
(SHEET CHAINAGE: 677+702 TO 681+153)

Unsurveyed Crown Land/Crown Land/Private Land/Nisga'a Lands & Village Lands/Lava Bed Park
Cassiar District & Range 5 Coast District

The intended plot size of this plan is 864mm in width by 560mm in height when plotted at a scale of 1: 5000 (use D size sheet)

BCGS: 1031.092/93.93M.042/51/52/61.103P.003/04/14/15/25/26/36/46/56/67/68/69/70

Sheet 38 of 49

FOCUS
Focus Surveys (BC) Limited Partnership
10715 - 100th Avenue, Fort St. John, BC
V1J 1Z3, 250.757.0300, www.focus.ca

FOCUS: 130275CP05R1
AFE: 5005948
TCPL: 004776-09-ML-03-174
ePASS: 10048852

REV. 1